

# AIS FIT Installation Instructions – April 2007

## I) GET THE PARTS

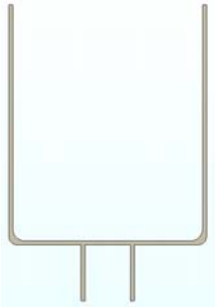
a. Base extrusion



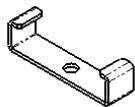
b. Cover extrusion



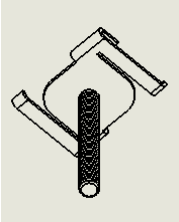
c. Filler Extrusion



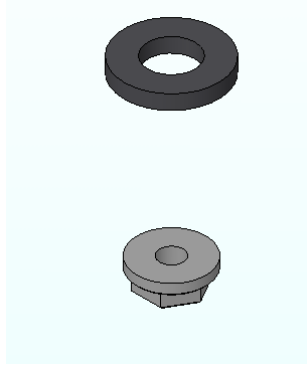
d. Ceiling spacer (if needed)



e. Ceiling grid hangers (for 1" wide grid other sizes special order)



f. Wide nut & washer

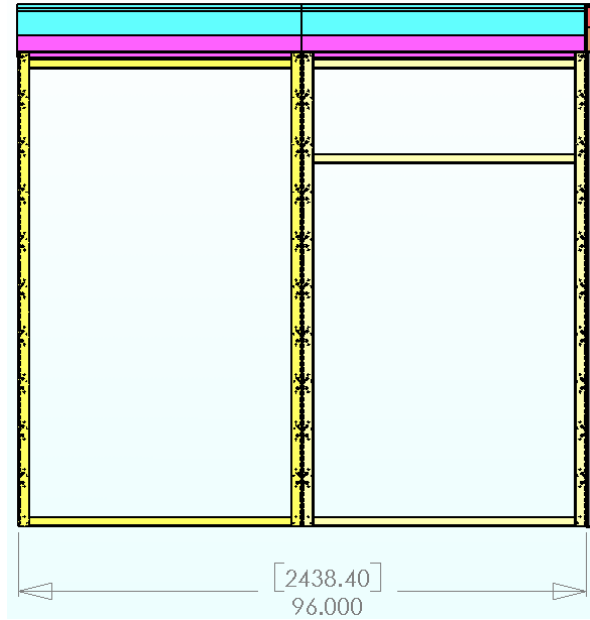


- g. 8-32x1 ¼" flat head tek screw (Self drilling screw)
- h. Corner and joined covers as needed per job (see next sheet)



II) IF EXTRUSIONS NOT PRE-CUT, MEASURE EXTRUSION LENGTH NEEDED

- a. Base extrusion should be cut as long as possible. Distance is determined outer frame edge to outer frame edge. The base extrusions can go over 3 way connectors if needed, the filler can not. The cover extrusion can if it is a hilo condition only.
- b. Maximum length per extrusion is 114"
- c. At least 2 connection points to ceiling grid should be available per extrusion.

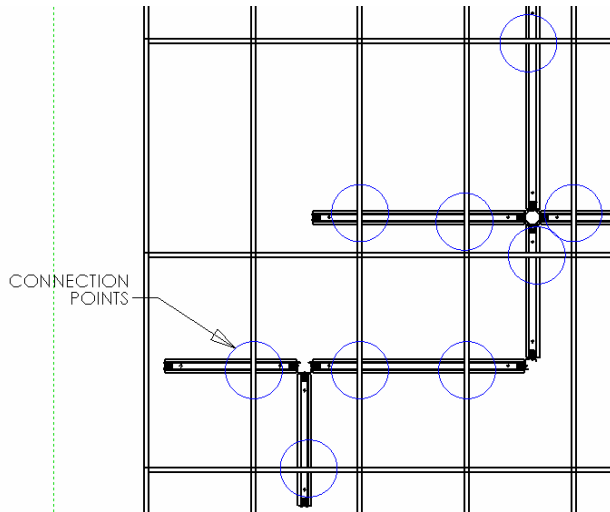


III) IF EXTRUSIONS NOT PRE-CUT, CUT EXTRUSIONS TO LENGTH

- a. The extrusion needs to be cut as square as possible.

IV) DETERMINE HOLE LOCATIONS FOR HANGERS

- a. Hangers will be located where the ceiling grid crosses the FTC extrusions.
- b. The location should be marked on the top of each extrusion.



- V) **DRILL HOLES FOR HANGERS IN BASE EXTRUSION**  
 a. A ½" hole saw should be used for the hanger holes.



- VI) **INSTALL HANGERS ON CEILING GRID**  
 a. Twist the hangers onto the grid beams until they snap in place.  
 b. Note: if the dropped ceiling has recessed tiles, place the ceiling spacer between the grid and the base extrusion over the stud of the hanger. Call AIS for more instructions if needed.)

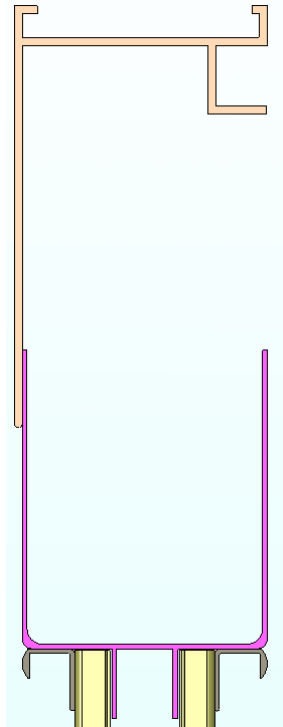


- VII) **MOUNT BASE EXTRUSION TO CEILING ON HANGERS WITH WIDE NUTS**  
 a. Place base extrusion on top of the frames it will cover.

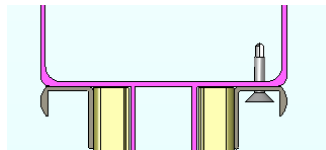
- b. Confirm the hole locations will match up with the hangers.
- c. Lift one end of the extrusion up so the end hanger goes through its hole.
- d. Use the wide nut with washer on that hanger to hold the extrusion in place.
- e. Lift the other end of the extrusion so the other hangers go through their holes.
- f. Use the wide nut and washer on that hanger to hold the extrusion up on both ends
- g. Place the other wide nuts and washers on the other hangers.
- h. Tighten all wide nuts so the extrusion is firmly held against the ceiling.



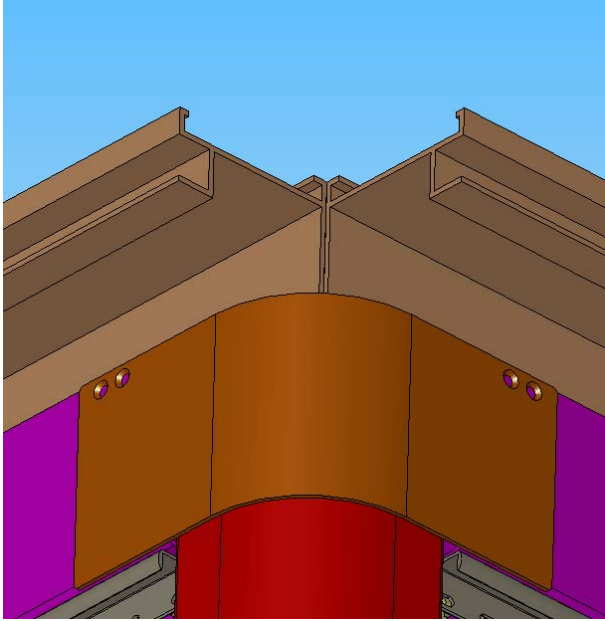
VIII) PLACE FILLER EXTRUSION ON TOP OF FRAMES



- IX) SCREW FILLER EXTRUSION IN FROM BELOW WITH SELF DRILLING SCREWS
- a. Screws go from inside of top tile retaining extrusion into bottom of filler.



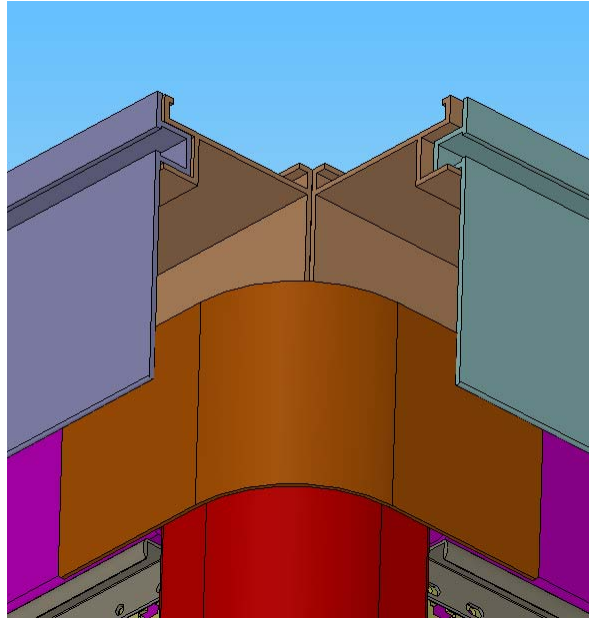
- X) PLACE LOWER SHROUD COVERS (CORNER OR FLAT) ON FILLER EXTRUSION AND SCREW IN PLACE WITH SELF DRILLING SCREWS



- XI) DRILL SCREW HOLES IN COVER EXTRUSION
- a.  $\frac{1}{4}$ " holes should be placed 2" in from each end as well as in the center of the length.

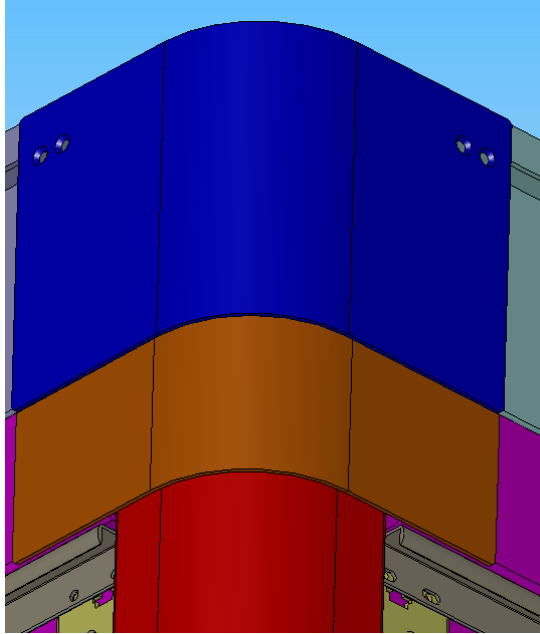


- XII) PLACE COVER EXTRUSIONS
- a. Make sure the cover extrusion fits fully in the base extrusion over its entire length.
  - b. The cover extrusions should go over the lower shroud covers (corner or straight)



- XIII) USE SELF DRILLING SCREWS IN COVER HOLES TO HOLD ON COVER
  - a. Make sure the cover extrusion remains fully seated while screws are tightened.
  
- XIV) PLACE OUTER TWO WAY COVERS OVER OUTER SIDE OF EXTRUSION
  - a. Make sure covers are even and square to extrusions.





- XV) USE SELF DRILLING SCREWS TO HOLD ON COVER
  - a. Make sure cover is held tight to extrusions while being screwed down.
  
- XVI) PLACE INNER TWO WAY COVERS OVER INSIDE SIDE OF EXTRUSION
  - a. Make sure covers are even and square to extrusions.
  
- XVII) USE SELF DRILLING SCREWS TO HOLD ON COVER
  - a. Make sure cover is held tight to extrusions while being screwed down
  
- XVIII) USE TOUCH UP PAINT TO COVER SCREW HEADS SO THEY BLEND IN WITH THE EXTRUSIONS.