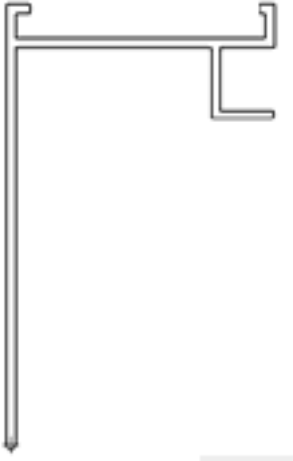


## AIS FIT Installation Instructions – April 2007

## I) Gather together the FIT parts

## A. Base Extrusion



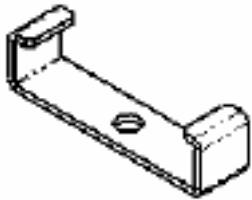
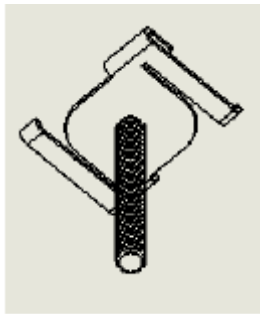
## B. Cover Extrusion



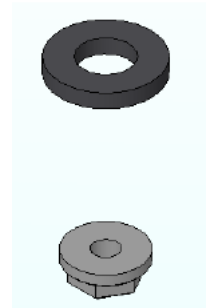
## C. Filler Extrusion



## D. Ceiling Spacer (if needed)

E. Ceiling grid hanhers (for 1" wide grid,  
other sizes special order)

## F. Wide nut &amp; Washer

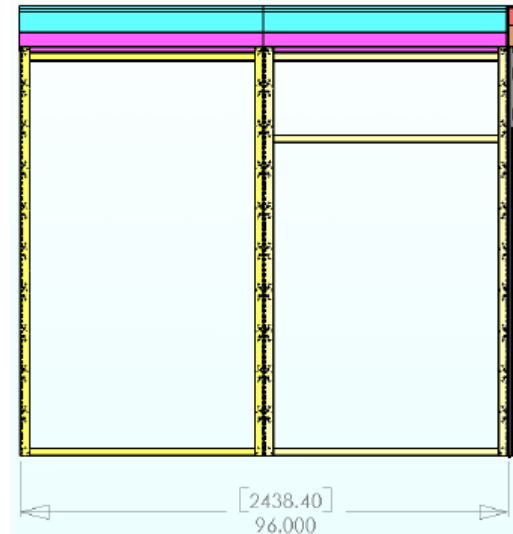


## G. 8-32x1 1/4" flat head tek screw (Self drilling screw)

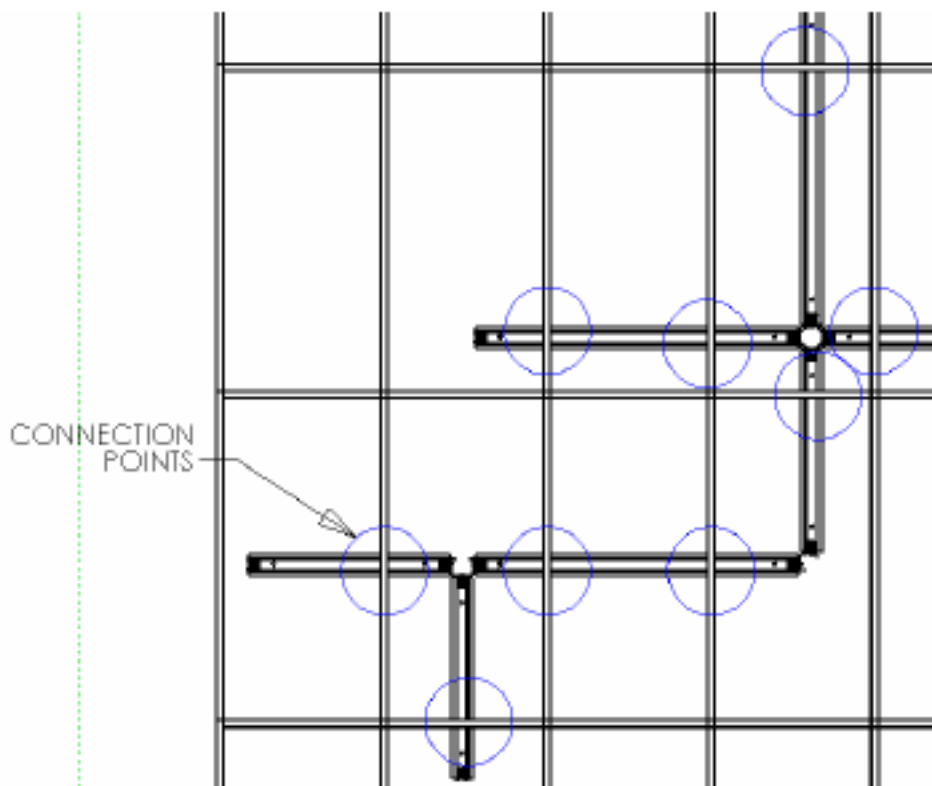
## H. Corner and joined covers as needed per job (see next sheet)



- II) **IF EXTRUSIONS NOT PRE-CUT, MEASURE EXTRUSION LENGTH NEEDED**
- A. Base extrusion should be cut as long as possible. Distance is determined by measuring outer frame edge to outer frame edge. The base extrusions can go over 3 way connectors if needed, the filler can not. The cover extrusion can if it is a hilo condition only.
- B. Maximum length per extrusion is 114"
- C. At least 2 connection points to ceiling grid should be available per extrusion.



- III) **IF EXTRUSIONS NOT PRE-CUT, CUT EXTRUSIONS TO LENGTH**
- A. The extrusion needs to be cut as square as possible.
- IV) **DETERMINE HOLE LOCATIONS FOR HANGERS**
- A. Hangers will be located where the ceiling grid crosses the FTC extrusions.
- B. The location should be marked on the top of each extrusion.



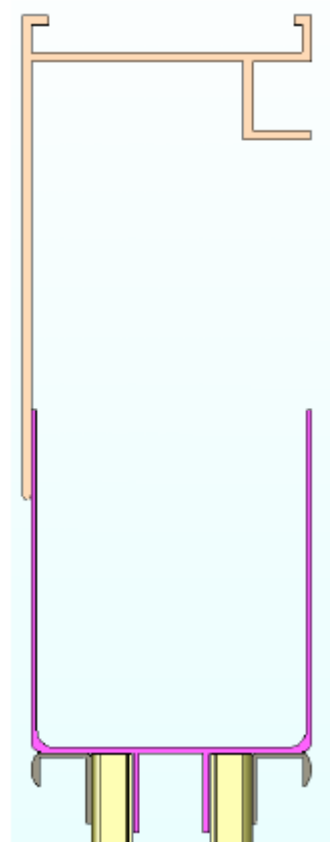
- V) **DRILL HOLES FOR HANGERS IN BASE EXTRUSION**  
A. A 1/2" hole saw should be used for the hanger holes.



- VI) **INSTALL HANGERS ON CEILING GRID**  
A. Twist the hangers onto the grid beams until they snap in place.  
B. Note: if the dropped ceiling has recessed tiles, place the ceiling spacer between the grid and the base extrusion over the stud of the hanger. Call AIS for more instructions if needed.

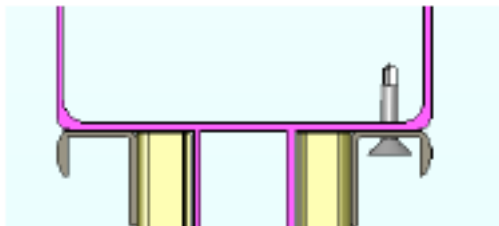


- VII) **MOUNT BASE EXTRUSION TO CEILING ON HANGERS WITH WIDE NUTS**
- A. Place base extrusion on top of the frames it will cover.
  - B. Confirm the hole locations will match up with the hangers.
  - C. Lift one end of the extrusion up so the end hanger goes through its hole.
  - D. Use the wide nut with washer on that hanger to hold the extrusion in place.
  - E. Lift the other end of the extrusion so the other hangers go through the holes.
  - F. Use the wide nut and washer on that hanger to hold the extrusion up on both ends
  - G. Place the other wide nuts and washers on the other hangers.
  - H. Tighten all wide nuts so the extrusion is firmly held against the ceiling.

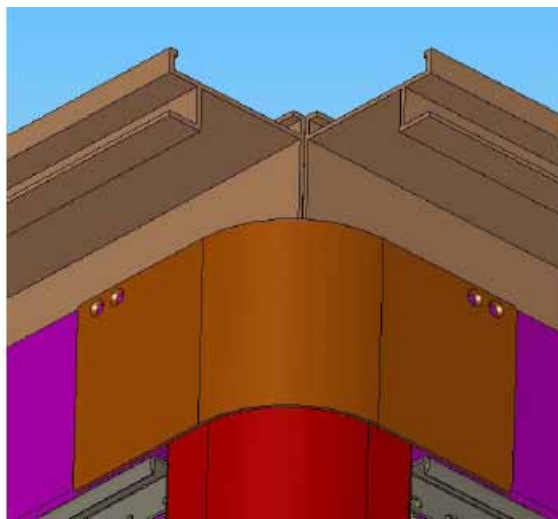


- VIII) **PLACE FILLER EXTRUSION ON TOP OF FRAMES**

- IX) **SCREW FILLER EXTRUSION IN FROM BELOW WITH SELF DRILLING SCREWS**  
A. Screws go from inside of top tile retaining extrusion into bottom of filler.



- X) **PLACE LOWER SHROUD COVERS (CORNER OR FLAT) ON FILLER EXTRUSION AND SCREW IN PLACE WITH SELF DRILLING SCREWS**

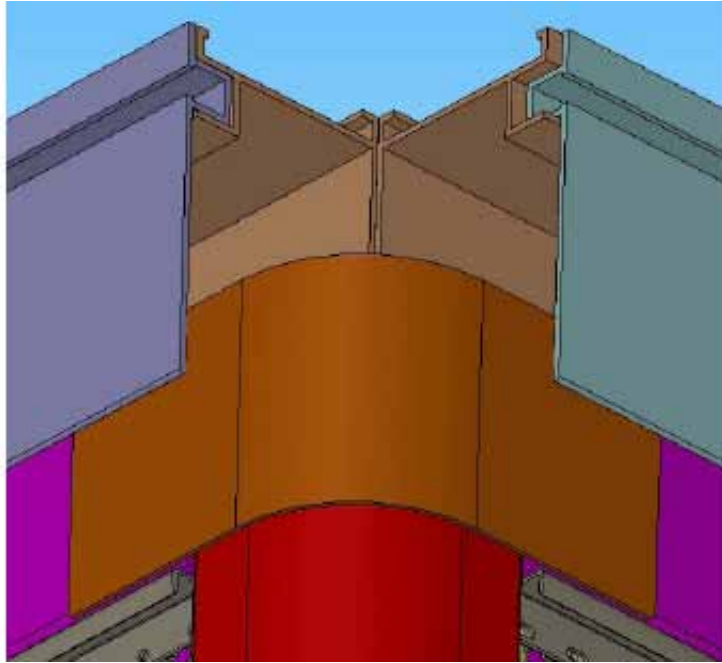


- XI) **DRILL SCREW HOLES IN COVER EXTRUSION**  
A. 1/4" holes should be placed 2" in from each end as well as in the center of the length.



**XII) PLACE COVER EXTRUSIONS**

- A. Make sure the cover extrusion fits fully in the base extrusion over its entire length.  
B. The cover extrusions should go over the lower shroud covers (corner or straight)

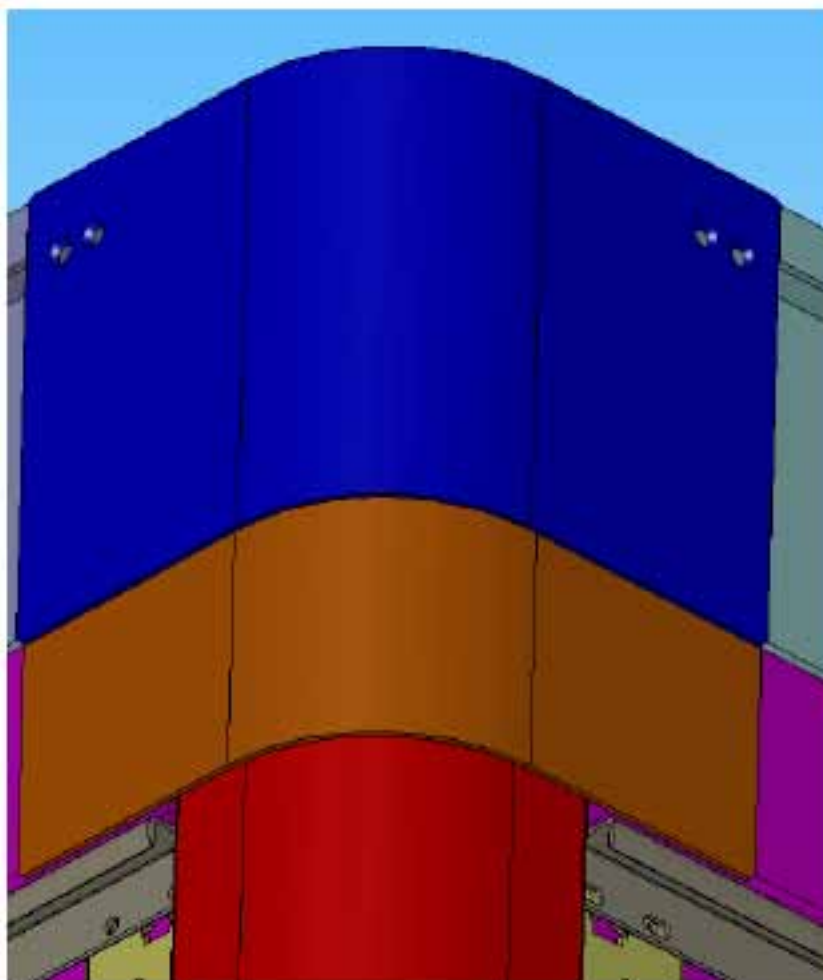
**XIII) USE SELF DRILLING SCREWS IN COVER HOLES TO HOLD ON COVER**

- A. Make sure the cover extrusion remains fully seated while screws are tightened.

**XIV) PLACE OUTER TWO WAY COVERS OVER OUTER SIDE OF EXTRUSION**

- A. Make sure covers are even and square to extrusions.





- XV) **USE SELF DRILLING SCREWS TO HOLD ON COVER**  
A. Make sure cover is held tight to extrusions while being screwed down.
- XVI) **PLACE INNER TWO WAY COVERS OVER INSIDE SIDE OF EXTRUSION**  
A. Make sure covers are even and square to extrusions.
- XVII) **USE SELF DRILLING SCREWS TO HOLD ON COVER**  
A. Make sure cover is held tight to extrusions while being screwed down
- XVIII) **USE TOUCH UP PAINT TO COVER SCREW HEADS SO THEY BLEND IN WITH THE EXTRUSIONS.**