



**CHELSEA™**

Seating

**AIS**

# CHELSEA

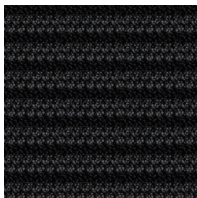
Designed by Justus Kolberg

Chelsea task chair couples all day comfort with an eye-catching back design. With its intuitive adjustments and flexible lumbar support, Chelsea ensures you'll be up to speed quickly. Plus, its simplified finishes and toolless, quick-connect assembly make specification and install easy!

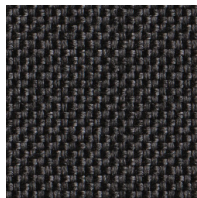
## Standard Features

- Toolless, quick-connect assembly in under 1 minute
- 3D arms allow height and width adjustment with front/back travel
- Height adjustable lumbar
- Synchro-tilt mechanism with front tension adjustment
- Four position back stop
- Pneumatic seat height adjustment
- Black five-star base with black hard casters
- White back frame and arms
- Black-striped mesh back
- Black upholstered seat with waterfall edge
- 300 pound rating
- BIFMA compliant
- CAL 117 fire code compliant
- Ships unassembled

## Standard Finishes Include:



Chelsea Black-striped mesh back



Chelsea Black upholstery



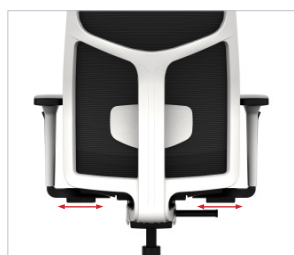
Weight	31.6 lbs
Seat Pan Width	26.5"
Depth	26.5"
Height	39.5 - 44.6"
Seat Height	16-21"
Seat Depth Adjustment	2.25"
Arm Height	7.4 - 11.3"
Adjustable Lumbar Vertical Travel	2.4"

## 3D Arm Measurements

Arm Height Adjustment	3.9"
Width Adjustment	1.4" on each side
Back to Front Travel	1.6"



Adjustable lumbar with 2.4" of height adjustment.



3D arms with 1.4" of arm width adjustment on each side.



Slim profile synchro-tilt mechanism.



Waterfall edge seat for all day long comfort.



For additional images: [imagelibrary.ais-inc.com](https://imagelibrary.ais-inc.com)

800.434.7400 | 978.562.7500 | [www.ais-inc.com](https://www.ais-inc.com) | [info@ais-inc.com](mailto:info@ais-inc.com) | 06/2023 | CHELPS

**ais**