

CLEAR SCREENS WORKSHEET

AIS

CLIP SUPPORTED SCREENS

MATERIAL OPTIONS



Glass
1/4" or 3/8" Clear



Lexan™
1/4" Lexan* Polycarbonate Clear

MOUNTING OPTIONS



Surface Mount Clip Screen



Freestanding Clip Screen
Only in Lexan
(The foot is 12" total in length.)



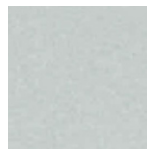
Under Surface Mount Clip Screen

APPLICATION EXAMPLES



Clip Screen, Surface Mount with Glass.

FINISH OPTIONS



Metallic Silver

NOTES

1. We do not recommend blending Glass screens and Lexan screens as they will appear different.
2. Clip dimensions: 2 1/8" H, 2 1/3" W and 1 1/2" D.
3. Cords can be managed on Clip Screens without cut-out via the slight opening that is standard.
4. Under Surface Mount Clip fits worksurfaces with thicknesses between 1.0" – 1 3/16".
5. Find all AIS screen images on the online image library.

AIS Screens are designed to be easily installed in most industry standard applications. However, it is the full responsibility of the dealer to understand the installation methods required as well as any limitations that may impact the proper installation of AIS Screens.

CLEAR SCREENS WORKSHEET

AIS

CHANNEL SUPPORTED SCREENS

MATERIAL OPTIONS



Glass
1/4" or 3/8" Clear

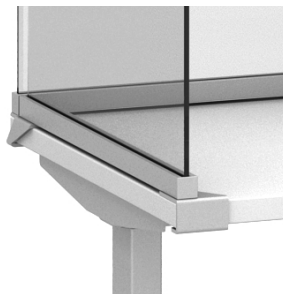


Lexan™
1/4" Lexan Polycarbonate Clear

MOUNTING OPTIONS



Surface Mount Channel Screen



Under Surface Mount
Channel Screen



Surface Mount
Channel Screen on Panel
Shown on Divi Linear.

APPLICATION EXAMPLES

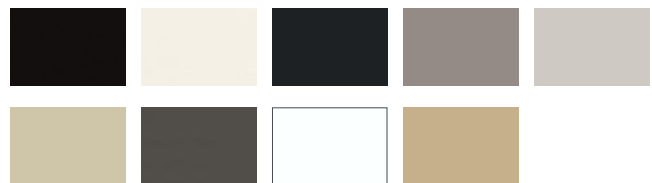


*Channel Screen with
Under Surface Mount in Glass
on Height Adjustable Table.*



*Channel Screen with
Surface Mount in Glass
on 120° Height Adjustable Table.*

FINISH OPTIONS



Choose from AIS Grade A Paint Finishes

NOTES

1. We do not recommend blending Glass screens and Lexan screens as they will appear different.
2. Channel dimensions: 1" H and 1" D
3. Surface Mount Channel Screens offered in Divi Linear and Radius trim.

AIS Screens are designed to be easily installed in most industry standard applications. However, it is the full responsibility of the dealer to understand the installation methods required as well as any limitations that may impact the proper installation of AIS Screens.

DIFFERENCE BETWEEN GLASS & LEXAN® POLYCARBONATE

GLASS



- AIS Glass is standard with straight corners.
- AIS Glass is standard tempered glass with standard iron content. Request samples from literature center.
- Glass can be cleaned with most common cleaning materials already found in janitorial supplies.
- 1/4" Glass weighs 2.88 lbs per square foot.
- 3/8" Glass weighs 4.32 lbs per square foot.

LEXAN® POLYCARBONATE



- AIS Polycarbonate/Lexan screens are standard with rounded corners and are clear.
- Polycarbonate has specific chemicals that should NOT be used when cleaning (please refer to the AIS Cleaning and Maintenance Guide online).
- 1/4" Lexan weighs 1.44 lbs per square foot.
- Lexan screens can accommodate sizes up to 20" high.
- Due to the inherent properties of polycarbonate material, slight bowing is possible with Lexan screens.
- AIS cannot ensure the alignment adjacencies of both glass and Lexan materials in clip and channel screens.
- Do not confuse Lexan polycarbonate with Plexi or Plexiglass. There are important differences.
 - Lexan polycarbonate is 200x stronger than plexiglass and is building-code friendly. (Note: local code compliance is the responsibility of the dealer and customer.)
 - Plexi or plexiglass is made of acrylic and does not meet NFPA fire testing requirements. **AIS does not use plexiglass on any of our screens.**
 - Plexi or plexiglass is very rigid and cracks easier than Lexan polycarbonate.

AIS Screens are designed to be easily installed in most industry standard applications. However, it is the full responsibility of the dealer to understand the installation methods required as well as any limitations that may impact the proper installation of AIS Screens.