

# CLEAR SCREENS WORKSHEET

# AIS

## CLIP SUPPORTED SCREENS

---

### MATERIAL OPTIONS



Glass  
1/4" or 3/8" Clear

---

### MOUNTING OPTIONS



Surface Mount Clip Screen



Under Surface Mount Clip Screen

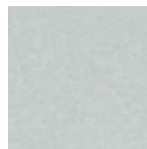
---

### APPLICATION EXAMPLES



Clip Screen, Surface Mount with Glass

### FINISH OPTIONS



Metallic Silver

### NOTES

1. Clip dimensions: 2 1/8" H , 2 1/3" W and 1 1/2" D.
2. Cords can be managed on Clip Screens without cut-out via the slight opening that is standard.
3. Under Surface Mount Clip fits worksurfaces with thicknesses between 1.0" – 1 3/16".
4. Find all AIS screen images on the online image library.

*AIS Screens are designed to be easily installed in most industry standard applications. However, it is the full responsibility of the dealer to understand the installation methods required as well as any limitations that may impact the proper installation of AIS Screens.*

# CLEAR SCREENS WORKSHEET

# AIS

## CHANNEL SUPPORTED SCREENS

---

### MATERIAL OPTIONS



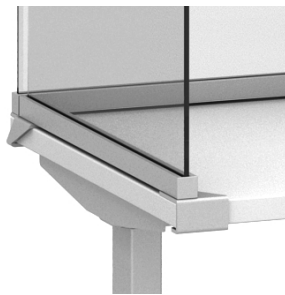
Glass  
1/4" or 3/8" Clear

---

### MOUNTING OPTIONS



Surface Mount Channel Screen



Under Surface Mount  
Channel Screen



Surface Mount  
Channel Screen on Panel  
Shown on Divi Linear.

---

### APPLICATION EXAMPLES

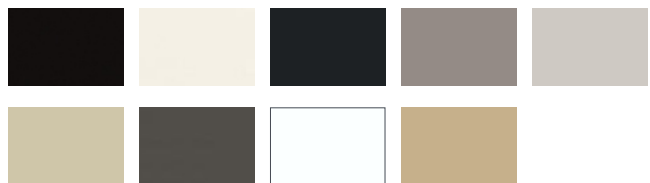


Channel Screen with Under  
Surface Mount in Glass on  
Height Adjustable Table.



Channel Screen with Surface  
Mount in Glass on 120° Height  
Adjustable Table.

### FINISH OPTIONS



Choose from AIS Grade A Paint Finishes

### NOTES

1. Channel dimensions: 1" H and 1" D
2. Surface Mount Channel Screens offered in Divi Linear and Radius trim.

AIS Screens are designed to be easily installed in most industry standard applications. However, it is the full responsibility of the dealer to understand the installation methods required as well as any limitations that may impact the proper installation of AIS Screens.