

VERTICAL SURFACE FABRIC OPTIONS

Grade B

AIS

Grade B Vertical Surface Fabrics

AIS



Lido
Balboa



Lido
Bryce Canyon



Lido
Cape May



Lido
Heartland



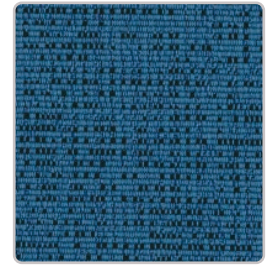
Lido
Hermosa



Lido
Oak Bluffs



Lido
Smith Point



Marint[†]
Benthic



Marint[†]
Blacktip



Marint[†]
Carrageen



Marint[†]
Clownfish



Marint[†]
Dolphin



Marint[†]
Grey Whale



Marint[†]
Ice Edge



Marint[†]
Intertidal



Marint[†]
Mangrove



Marint[†]
Pelican



Marint[†]
Red Snapper



Marint[†]
Sand



Marint[†]
Sea Glass

Grade B Vertical Surface Fabrics

AIS



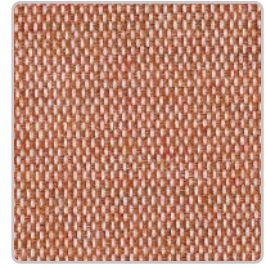
Marint
Sunfish



Marint⁺
Swell



Marint⁺
Tusk



Nature
Campfire



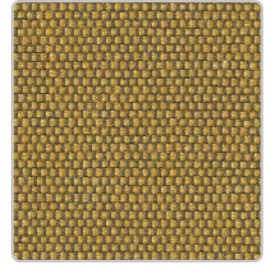
Nature
Canoe



Nature
Cot



Nature
Docks



Nature
Firefly



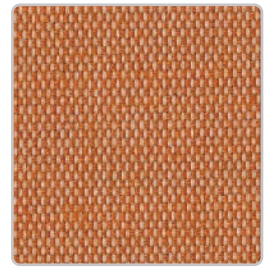
Nature
Forest



Nature
Granola



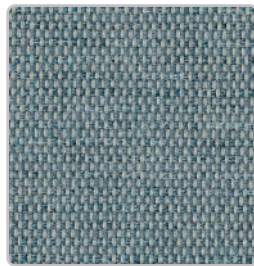
Nature
Grill



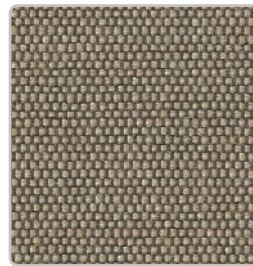
Nature
Jamboree



Nature
Pond



Nature
Rain



Nature
Scout



Nature
Smore



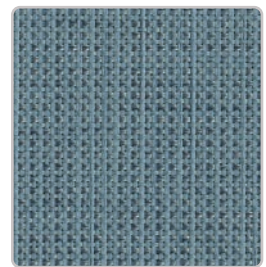
Nature
Tent



Off The Grid
Coal



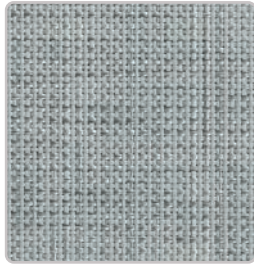
Off The Grid
Fossil



Off The Grid
Hydro

Grade B Vertical Surface Fabrics

AIS



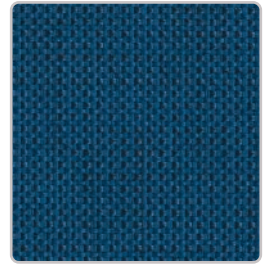
Off The Grid
Lava



Off The Grid
Steam



Off The Grid
Thermal



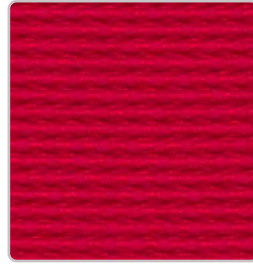
Off The Grid
Tidal



Off The Grid
Woodchip



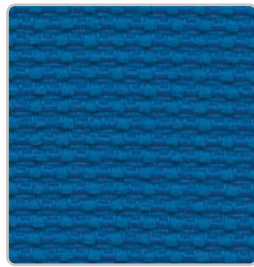
Purpose+
Ambition



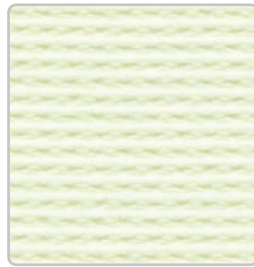
Purpose+
Desire



Purpose+
Direction



Purpose+
Focus



Purpose+
Hope



Purpose+
Idea



Purpose+
Intend



Purpose+
Mission



Purpose+
Objective



Purpose+
Plan



Purpose+
Reason



Purpose+
Strive



Purpose+
Target



Purpose+
Wish



Spinel
Alabaster

Grade B Vertical Surface Fabrics

AIS



Spinel
Opal



Spinel
Perlite



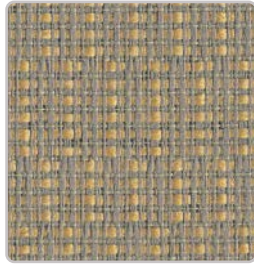
Spinel
Petosky



Spinel
Sandstone



Spinel
Tiger Eye



Sprite
Harvest



Sprite
Khaki



Sprite
Kiwi



Sprite
Linen



Sprite
Powder



Sprite
Sky



Sprite
Snow

NOTE: Colors on this card serve as a color guide only. Please refer to the actual memo sample before finalizing finish selection. Memo samples are available at www.guilfordofmaine.com

Grade B Vertical Surface Fabrics

Material Application Grid

	Upholstery	Divi Panels	Matrix Tiles	Screens	Tackboards	Overheads
Lido	N/A	•	•	•	•	•
Marin†	N/A	•	•	•	•	•
Nature	N/A	•	•	•	•	•
Off The Grid	N/A	•	•	•	•	•
Purpose†	N/A	•	•	•	•	•
Spinel	N/A	•	•	•	•	•
Sprite	N/A	•	•	•	•	•

Grade B Vertical Surface Fabrics

Technical Information

Pattern	Width	Fiber Content	Lightfastness	Repeat	Cleaning Code
Lido	66"	48% Post-Consumer Recycled Polyester; 52% Pre-Consumer Recycled Polyester	40 Hours, Class 4.0	None	WS
Marin†	67"	90% Post-consumer recycled polyester including ocean waste; 10% polyester	40 Hours, Class 4.0	12.8"L, 19.1"W	WS
Nature	66"	100% Post-Consumer Recycled Polyester	40 Hours, Class 4.0	None	WS
Off The Grid	66"	49% pre-consumer recycled polyester; 38% post-consumer recycled polyester; 13% polyester	40 Hours, Class 4.0	None	WS
Purpose†	66"	100% Post-Consumer Recycled biodegradable* Polyester	40 Hours, Class 4.0	None	WS
Spinel	66"	32% Post-Consumer Recycled Polyester; 68% Pre-Consumer Recycled Polyester	40 Hours, Class 4.0	16.5"L, 16.5"W	WS
Sprite	66"	5% Post-Consumer Recycled Polyester; 95% Pre-Consumer Recycled Polyester	40 Hours, Class 4.0	7.25"L, 14"W	WS

Cleaning Code

Standard Care Label W-S. Clean with water based cleaning agents, foam or pure, water free solvents. Vacuuming or light brushing is recommended to prevent dust and soil buildup.

Performance



ACT® registered certification marks.

Flammability: ASTM E84 Class I or A

*Multiple factors affect fabric durability and appearance retention, including end-user application and proper maintenance.

Miscellaneous

Colors may vary between dye lots. Proudly woven in the USA supporting our local communities.



These patterns are included in the underwriters laboratory panel fabric recognition program. Additional testing of this U.L. recognized component fabric is not required on approved panels from participating manufacturers.



Guilford of Maine

A duvaltex brand

CLEAN IMPACT **TEXTILES**®

To obtain the memo samples, please visit www.guilfordofmaine.com

* Rate and extent of biodegradation into elements found in nature is 91% after 1,278 days under ASTM D5511 (Anaerobic Biodegradation of Plastic Materials Under High Solids Anaerobic Digestion Conditions). The test was done with the same component (PET) polyester and biocatalyst additive. No evidence of further degradation.

To obtain the memo samples, please visit www.guilfordofmaine.com

To view samples online, visit www.ais-inc.com/finishcenter
800.434.7400 | 978.562.7500 | www.ais-inc.com | 01/2024 | GFPANBFC

AI**S**