



# ENCOUNTER™ POWERBEAM

Beam-based Power Solution

**AIS**



## **POWERBEAM AND HEIGHT ADJUSTABLE TABLES: MEET THE POWER COUPLE**

Ultra-efficient PowerBeam adds impressive capabilities to height adjustable tables. Available in multiple lengths, angles, and heights to optimize space within your floorplate, PowerBeam ties it all together, putting power just where it's needed.

Thousands of table combinations, and the power to support them.



**THE POWER TO WORK  
ANY WAY YOU WANT**

Who wants to sit by the outlet? Everyone! PowerBeam makes it possible with multiple outlets within easy reach. It can be cleanly mounted just below the worksurface, helping you maintain a wide-open, minimal look throughout the whole office.



**WORKING TOGETHER**  
**FOR THE GREATER GOOD**

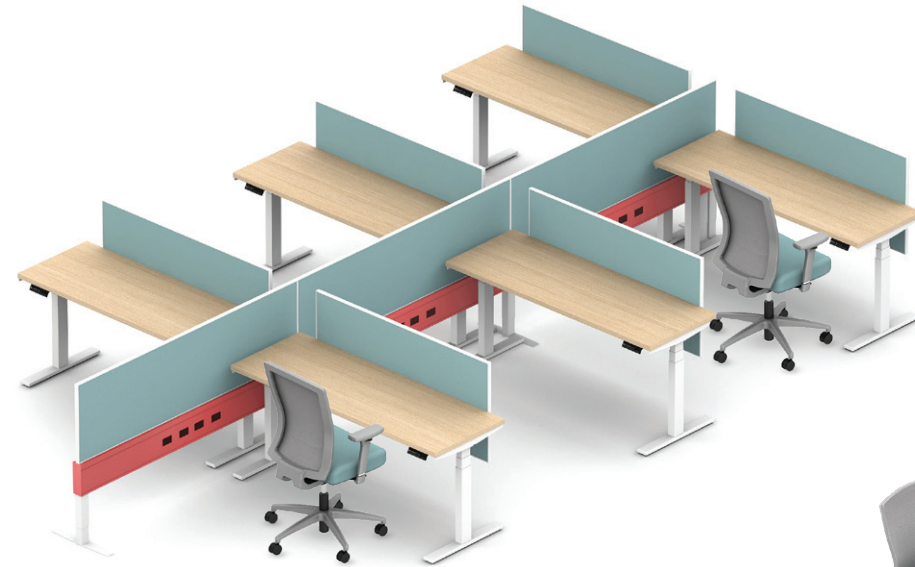
Efficient planning and increased leg space can be achieved when you combine PowerBeam and Calibrate. Here, PowerBeam securely rests on the Calibrate lower storage, which nicely conceals the Calibrate Height Adjustable Table leg inside while offering user storage and guest seating.

The result—an integrated workstation that supports healthy posture shifts throughout the day. Now, that's a real power play.

# ONE SIMPLE BEAM SO MANY WAYS TO FILL THE WORKSPACE



Design with or without gallery panels or storage. You're free to plan whatever kind of space users need.



Just two supports for every 96 inches makes PowerBeam a clean, cost-effective way to design a flexible workspace.



Have a meeting? Pull up a table... we've got power.

Choose from straight, 90° or 120° layouts.



PowerBeam works with Calibrate Height Adjustable Tables, concealing legs within storage to save space and simplify the look.



PowerBeam brings power to fixed height work stations and gracefully extends to meeting space with an optional power puck.



The hunt for outlets is over. With up to 8 receptacles in every beam, the power is everywhere.



Reduce vertical supports by specifying PowerBeam mounted on Calibrate Storage.

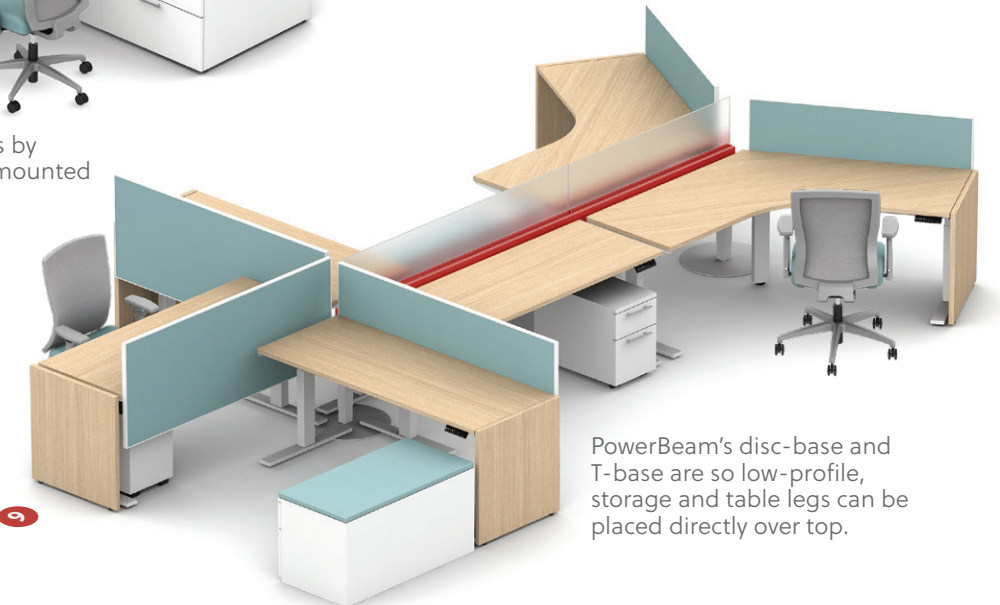
Less really can be more. With a value-engineered solution, a short straight section can extend power beyond the beam and even create 90° and 120° layouts.



Place tables perpendicular to the beam to make the most of your space.



Place tables parallel to the beam to optimize space and maximize workflow.



PowerBeam's disc-base and T-base are so low-profile, storage and table legs can be placed directly over top.

## OPEN UP THE POSSIBILITIES

All you see is a modern, minimalist design—tables, screens and storage with a wide variety of fabric and finish options. Yet PowerBeam is working hard below the worksurface, providing the structure and power to make all things possible.

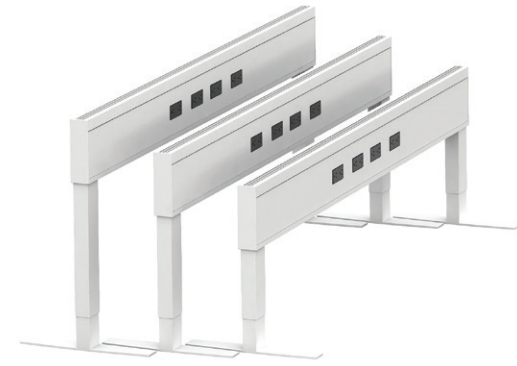
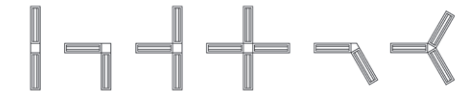


1

### BEAM

#### Flexible dimensions to fit every space

- Sleek profile: 2.5 inches wide by 8 inches tall
- 21, 25 or 29 inch height
- 36 to 96 inch runs in 6 inch increments
- Connections: Straight, 90° and 120°
- 2 inches of leveling



#### Roll up and get to work

Stay for a day or a week. Just plug in and then roll out when you're done. Your space. Your way.



2

### SUPPORT OPTIONS

#### In addition to its leg options, PowerBeam can also be supported by storage or gallery panels

- 29-inch PowerBeam can be supported by storage, 18-inch T-base, disc-base or gallery panels
- 21- and 25-inch PowerBeam can be supported by the 12- or 18-inch T-base, disc-base or gallery panels
- The post leg can be used on corners. See price list for other uses
- Up to 96 inch runs with just two supports



## PRACTICALITY MAKES PERFECT

An agile, user-friendly set of options lets you tailor the details exactly to your needs. From size and materials to support elements, PowerBeam can be whatever you want it to be.

3

### POWER AND DATA ROUTING

- Connect power from floor, ceiling, or wall to every workstation
- Choose power access on one side or both
- Optional Vertical Wire Managers collect protect cables
- Optional powercord tray for easy cord management
- 4-circuit power



#### Plug in at the desk

Multiple styles provide options for power, USB and wireless charging.



4

### SCREENS

Choose to mount them directly to PowerBeam or to adjacent tables. Available in framed fabric, PET, markerboard, or glass (refer to pricelist for glass mount options).

#### Extend the power

Bring power beyond the workstation to an impromptu meeting space complete with whiteboards.



#### Easy leveling

Legs have two inches of adjustability making it simple to level, even across long runs.

5

### PERFECT COMBINATIONS

#### Paired with tables

PowerBeam can be paired with height adjustable tables or fixed tables.



#### Paired with storage

PowerBeam and Calibrate Height Adjustable Tables are ideal for high-density applications, allowing you to hide legs within the storage for a cleaner look.



### ENCOUNTER POWERBENCH

Height-Adjustable Benching using the shared Encounter power platform, PowerBench integrates a 2-stage height-adjustable leg into its base. The all-in-one solution of PowerBench gives ergonomic control to the end user for personalized comfort all day long.

Choose from the metal H-Leg for a clean, modern look, or the enclosed laminate base for an upscale, traditional look.

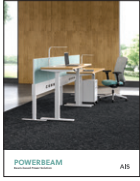


PowerBench with H-Leg



PowerBench with laminate base

# FABRICS AND FINISHES



## COVER AND PAGES 8-15

**Worksurfaces:** Recon Oak Laminate  
**PowerBeam and Table legs:** Satin White  
**Fabric Screens:** AIS New England Dixville Notch  
**Natick Seating:** Solid Grey Mesh, Alta Mirage Miami Seat, Black Frame and Arms, Aluminum Base



## PAGES 4-5

**Worksurfaces:** True White Laminate  
**PowerBeam:** Metallic Silver **Glass:** Grey Tint  
**Fabric Screens:** Mayer Elevation Cranberry  
**Storage:** Woodrose **Upton Seating:** Black Frame, Polished Base, White/Black Striped Mesh, Luum Seismic Shift upholstery



## PAGES 2-3

**Worksurfaces:** True White Laminate with Matching Edgeband **PowerBeam and Table Legs:** Metallic Silver **Privacy Screen:** Frosted Glass and Sina Pearson Chant Yarrow with Painted Trim Grey Value **End Panels:** Formica Wheat Strand with Linen Edgeband **Natick**

**Seating:** Grey Graduated Mesh, Grey Base, Frame and Arms, Loomsource Enamour Genteel Upholstery **Stow Seating:** Mayer Fedora Aegean Upholstery and White/Black Striped Mesh



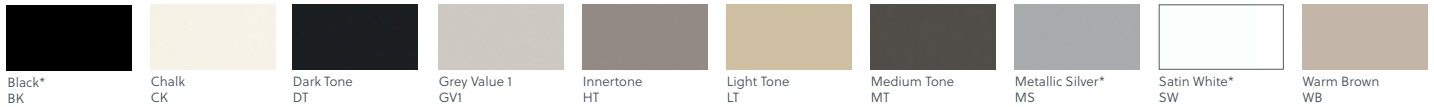
## PAGES 6-7

**Worksurfaces:** Summer Drops Laminate with Matching Edgeband **Beam, Screen Trim and Table Legs:** Metallic Silver **Privacy Screens:** Frosted Glass with Silver **Tackable Screens:** New England Hartford Upholstery **Calibrate Casegoods Storage:** Absolute

Acajou Laminate with Sina Pearson Terrace Flip Flops and Mayer Fedora Mink Upholstered Cushions **Bolton Seating:** Grey Base, Frame and Arms, Upholstered Back in Maharam Prime Popsicle, Seat in Sina Pearson Triangles Sunset

## POWERBEAM SPINE PAINT FINISHES

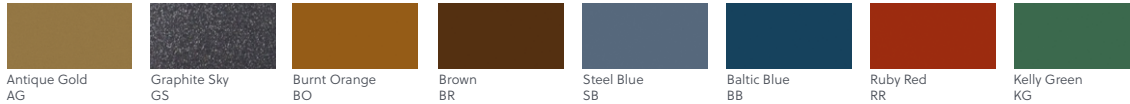
### Grade A



### Grade B



### Grade C



\*Height Adjustable Table leg finishes

See price list for all finish options.

Please request samples to view before specifying, as the colors, materials and finishes featured within our printed and electronic literature may vary due to the printing processes and/or viewing screens used. Availability of finishes and materials shown within this brochure may vary due to manufacturers' lifecycle management. Some materials shown are standard on AIS and some are COM. Please check with AIS to confirm availability and pricing.

## National Showrooms:

### Leominster

AIS Headquarters  
 25 Tucker Drive  
 Leominster, MA 01453

### New York

AIS New York  
 257 Park Avenue South  
 New York, NY 10010

### GSA Sales

GSA Contract 47QSMA20D08Q4  
 Multiple Award Schedule (MAS)  
 Large Category: Furniture & Furnishings  
 Subcategories: Office Furniture, Packaged Office Furniture & Furniture

### Chicago

The Merchandise Mart  
 Suite 391  
 Chicago, IL 60654

### Washington, D.C.

AIS Washington, D.C.  
 1501 M St., NW, Suite 230  
 Washington, D.C. 20005

### For additional information on AIS:

Dealer Showrooms, Representative Directory, Project Case Studies, Online Catalog & Product Showcase  
 Visit: [ais-inc.com](http://ais-inc.com)

