



BOLTON™

Seating

AIS

BOLTON

Design Bolton just the way you need it for ergonomic support with a splash of color. Bolton is a full featured task chair series with versatility—including an array of back mesh and seat upholstery colors and options—to suit any space. Plus, it's configurable to support a user's size, shape, tasks and preferences. Bolton is available with a mid-back and a high-back version.



High-Back



Mid-Back



High-Back with Headrest

Features & Options

- Grey or black base, frame, and 1-D, 3-D, or 4-D arms
- Optional polished aluminum base
- Weight-activated synchro-tilt mechanism (automatic tension) with four-position back-lock
- Center tension adjustable synchro-tilt mechanism with upright back-lock
- Armless, 1-D, 3-D, and 4-D arms in black and grey to match the frame color. The 4-D arm with polished element, adjusts in height, from side to side, front to back, and rotates. Once adjusted for proper fit the 4-D arm-cap will lock into place.
- 3" seat depth adjustment
- Optional headrest articulates and adjusts to support your head and neck throughout various working postures. Height and depth adjustable. (Available on high-back model)
- Pneumatic seat height adjustment
- Optional adjustable lumbar support
- Solid or graduated stripe mesh in a variety of colors, or fully upholstered back
- High-back and mid-back version
- BIFMA level® certified
- CAL 117 or optional CAL 133 fire code compliance
- Certain pre-configured all-black models are in the Express Program (three-day ship)

Mesh colors include:



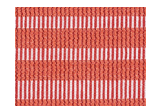
Graduated Stripe-Black



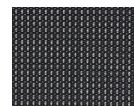
Graduated Stripe-Blue



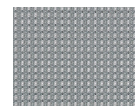
Graduated Stripe-Grey



Graduated Stripe-Orange



Solid-Black



Solid-Grey

Due to print variations, colors and materials shown may not be fully accurate. Please see your AIS representative for samples.

High-Back - 4400 (Express)/4400C (Configurable)

Weight	34 lbs
Width	26"
Depth	24"
Height	41 – 45"
Seat Width	20"
Seat Depth	16 – 19"
Seat Height	16 – 20" or 18 – 23"
Arm Height	7.5 – 10"
Lumbar Apex	8 – 10"

Mid-Back - 4471 (Express)/4471C (Configurable)

Weight	32 lbs
Width	26"
Depth	24"
Height	38.75 – 42.75"
Seat Width	20"
Seat Depth	16 – 19"
Seat Height	16 – 20" or 18 – 23"
Arm Height	7.5 – 10"
Lumbar Apex	8 – 10"

For additional images: <http://imagelibrary.ais-inc.com/>

800.434.7400 | 978.562.7500 | www.ais-inc.com | imagelibrary.ais-inc.com | info@ais-inc.com | 08/2020 | BOLTPS

AIS