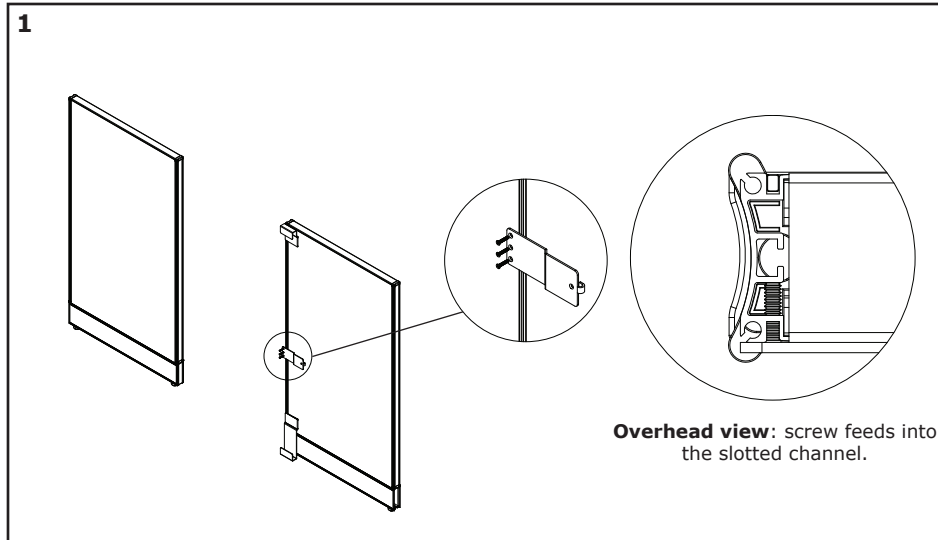
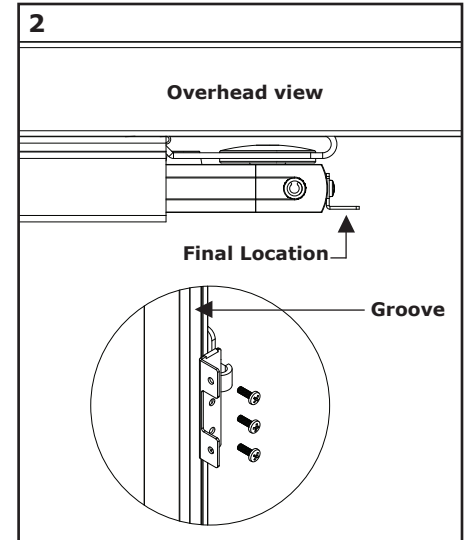


Sliding Door Lock Kit Instruction

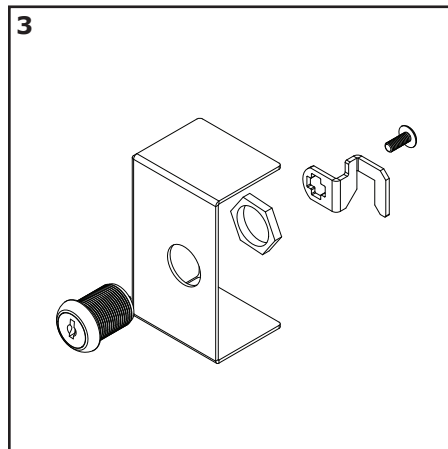
Step 1 - Remove door from panel by removing front wheel and bumper and sliding door out of top and bottom brackets so door is completely off the panel. Using (3) #9-1" flat head screws, attach Lock Bracket to the panels slotted channel at desired height (28" or 29" from floor).



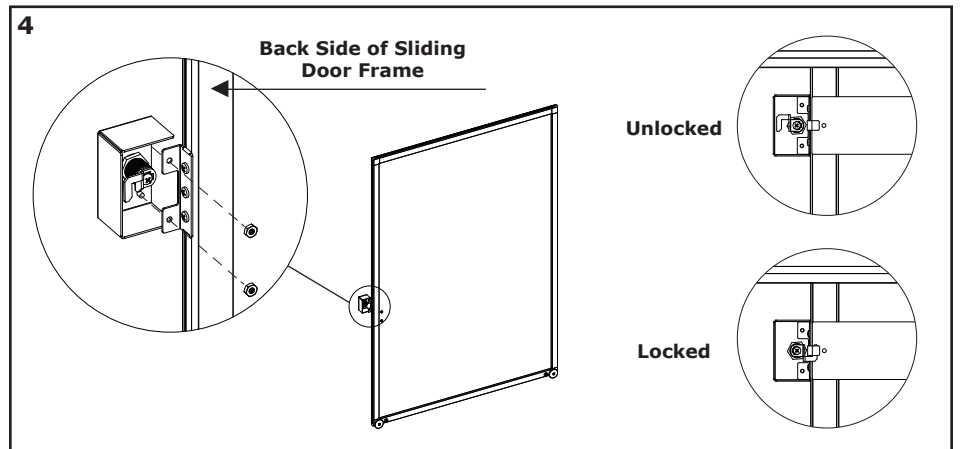
Step 2 - Place sliding door between brackets and slide from front to back. Re-install front wheel and bumper. Using (3) #8-1/2" drill point screws, attach "L" Bracket to groove on the sliding door. **Important:** "L" Bracket and Lock Bracket must be mounted at same height from floor.



Step 3 - Install Cam and Core Cylinder on Lock Cover.



Step 4 - Once again remove door from panel by removing front wheel and bumper and sliding door out of top and bottom brackets so door is completely off the panel. Using (2) #8 hex nuts, install the Lock Cover Assembly to the "L" Bracket.



Step 5 - Place sliding door between brackets and slide from front to back. Re-install front wheel and bumper

