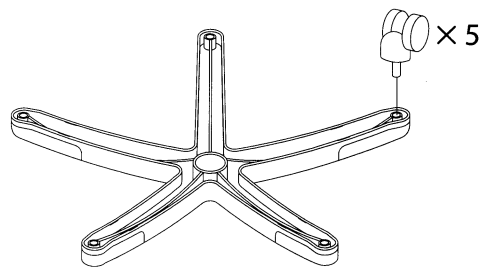


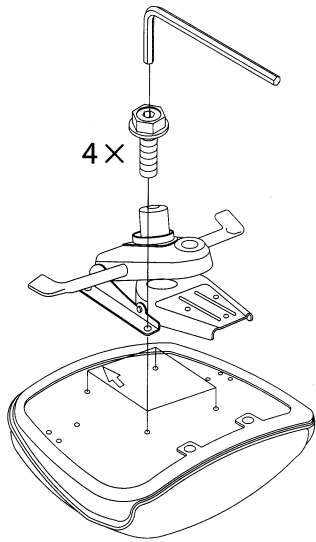
STEP 1

Invert the 5 leg base. Press-fit the casters into the holes located at the end of each leg.



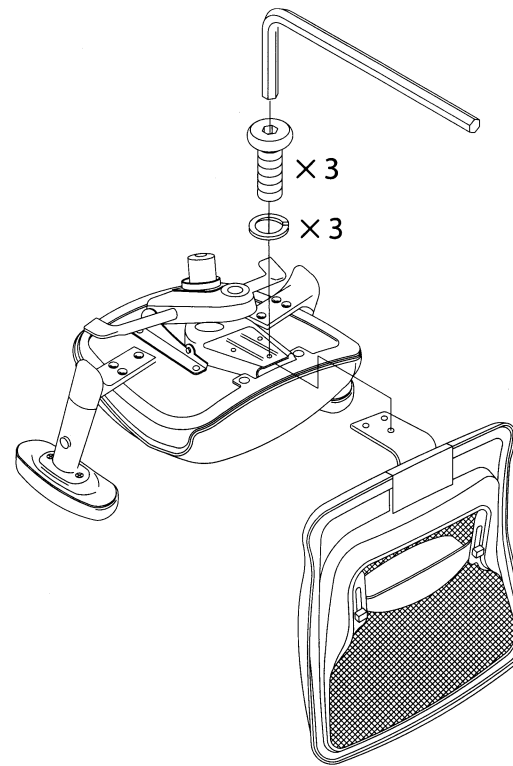
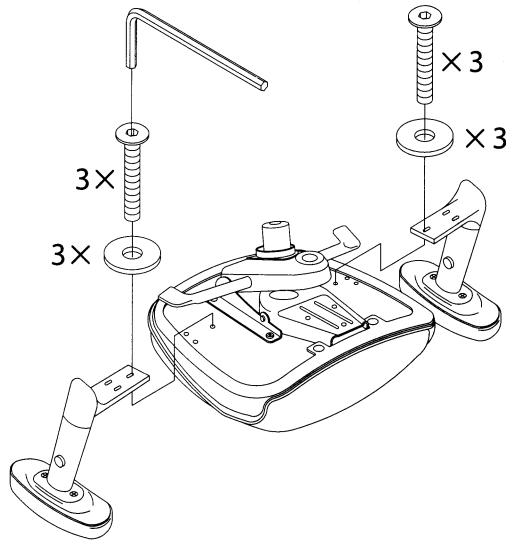
STEP 2

For ease of assembly, invert the seat cushion and place on a firm raised surface. The empty carton provides an ideal surface for steps 2 - 5. Align the seat plate with the pre-drilled holes on the seat cushion's underside. The large knob should face the front of the cushion. Tighten the four flanged allen head screws.



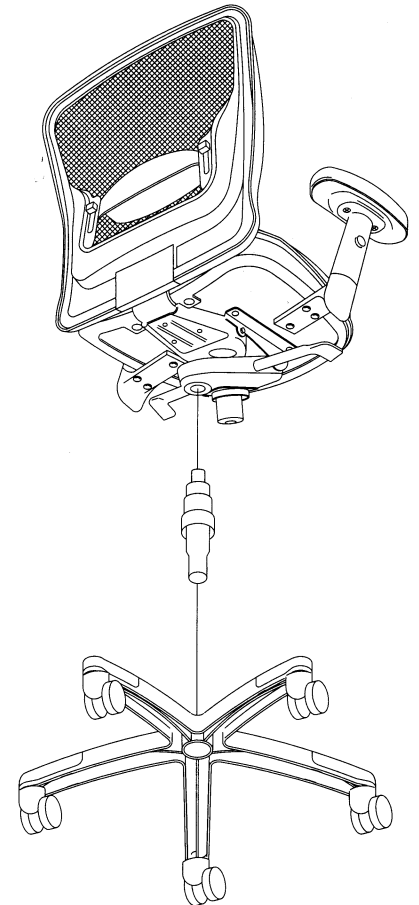
STEP 3

Attach each arm to the seat cushion's underside with three allen head screws and washers as depicted in the illustration. Tighten securely.



STEP 4

Attach the seat back to the cushion bottom with three allen head screws and lock washers. Tighten securely.



STEP 5

Place the base on the floor with the caster side down. Insert the pneumatic support into the center hole of the base. Align the top half of the chair assembly as shown and press downward to firmly secure.

Warning: It is unsafe to use this product for activities other than it was designed for. Never kneel or stand on the chair. Doing so may result in serious injury. Time of use and type of use varies by individual. To maintain longevity and reliability of components, check all assembly screws every 3 months. Tighten as needed.