



NATICK™
Seating

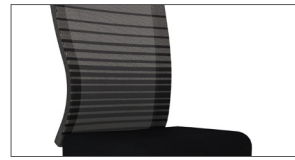
AIS

NATICK

Choices you'll appreciate. Seat height, seat depth, adjustable lumbar support, arm adjustability, along with a multiple position back lock allow you to fine-tune Natick to your size, shape, preference, and task at hand. Express three-day shipping is available for select black and grey models; standard shipping for optional configurations. Have something unique in mind? Don't hesitate to ask about all of our Natick options.

Features & Options

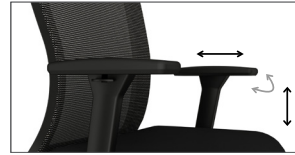
- Grey or black base, frame, and 1-D, 3-D, or 4-D arms
- Optional polished aluminum base
- Weight-activated synchro-tilt mechanism (automatic tension) with four-position back-lock
- Center tension adjustable synchro-tilt mechanism with upright back-lock
- Armless, 1-D, 3-D, and 4-D arms in black and grey to match the frame color. The 4-D arm with polished element, adjusts in height, from side to side, front to back, and rotates. Once adjusted for proper fit the 4-D arm-cap will lock into place.
- 3" seat depth adjustment
- Optional headrest articulates and adjusts to support your head and neck throughout various working postures. Height and depth adjustable.
- Pneumatic seat height adjustment
- Optional adjustable lumbar support
- Task and stool version
- Solid or graduated stripe mesh in a variety of colors, or fully upholstered back
- BIFMA level® certified
- CAL 117 or optional CAL 133 fire code compliance
- Certain pre-configured all-black or all-grey models are in the Express Program (three-day ship)



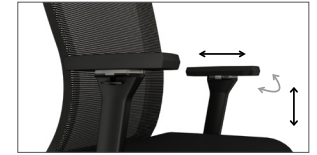
Armless



1-D Arm

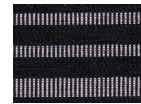


3-D Arm

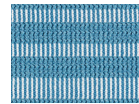


4-D Arm

Mesh colors include:



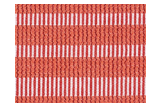
Graduated Stripe-Black



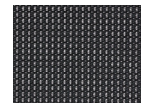
Graduated Stripe-Blue



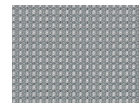
Graduated Stripe-Grey



Graduated Stripe-Orange



Solid-Black



Solid-Grey

Due to print variations, colors and materials shown may not be fully accurate. Please see your AIS representative for samples.

Task Seating – 4900/4900C (Configurable) 4930/4930C (Configurable)

Weight	35 lbs
Width	26"
Depth	24"
Height	40 – 45"
Seat Width	20"
Seat Depth	16 – 19"
Seat Height/Standard	16 – 20"
Seat Height/High	18 – 23"
Arm Height	7.5 – 10"
Lumbar Apex	8 – 10"

Stool – 4923C (Black Configurable)

Weight	41 lbs
Width	26"
Depth	24"
Height	43.5 – 51.5"
Seat Width	20"
Seat Depth	16 – 17.6"
Seat Height/Standard	21 – 28"
Seat Height/High	25 – 35"
Arm Height	7.5 – 10"
Lumbar Apex	8 – 10"



For additional images: <http://imagelibrary.ais-inc.com/>

800.434.7400 | 978.562.7500 | www.ais-inc.com | info@ais-inc.com | 08/2020 | NATKPS

AIS