

PET SCREENS WORKSHEET

AIS

LITE CLIP SCREENS

SCREEN OPTIONS



Territory



Front/Rear



L Wrap

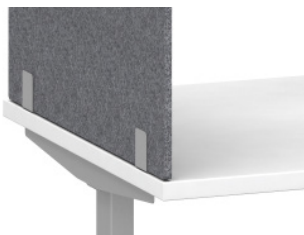


U Wrap

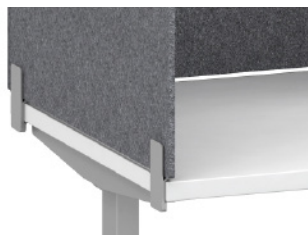


Partial Modesty

MOUNTING OPTIONS



Surface Mount



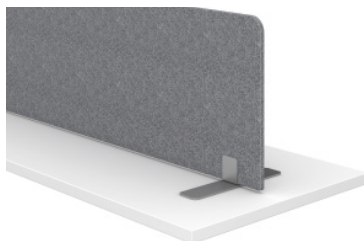
Under Surface Mount



Under Surface Clamp Mount



Panel Mount



Freestanding

AIS Screens are designed to be easily installed in most industry standard applications. However, it is the full responsibility of the dealer to understand the installation methods required as well as any limitations that may impact the proper installation of AIS Screens.

LITE CLIP SCREENS

APPLICATION EXAMPLES



L Wrap Partial Modesty Screen
(Divi Panel System Application)



Under Surface Mount Territory Lite Clip Screens
(Oxygen Desking Application)



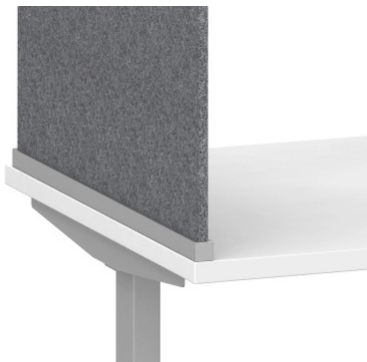
Freestanding Lite Clip Screen separating a shared table



Panel Surface Mounted Lite Clip Screens
(Matrix Panel System Application)

CHANNEL MOUNT SCREENS

SCREEN OPTIONS



Territory



Front/Rear



Channel Mounted on Gallery Panel



Universal Spine*

**Universal PET spine available on Encounter PowerBeam and PowerBench, Oxygen and Aloft*

MOUNTING OPTIONS



Surface Mount



Under Surface Mount



Panel Mount

AIS Screens are designed to be easily installed in most industry standard applications. However, it is the full responsibility of the dealer to understand the installation methods required as well as any limitations that may impact the proper installation of AIS Screens'

CHANNEL MOUNT SCREENS

APPLICATION EXAMPLE



Front/Rear Surface Mounted Channel Screen
(Calibrate Height Adjustable Table Application)

RADIUS SCREENS for Rectangle Height Adjustable Tables with Radius Corners

APPLICATION EXAMPLES

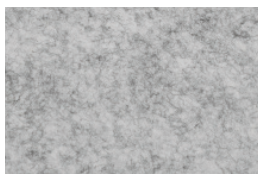


L Wrap Partial Modesty Screen Channel Screen
(Day-to-Day Height Adjustable Table Application)



U Wrap Screen (Day-to-Day Height Adjustable
Table Application)

FINISHES



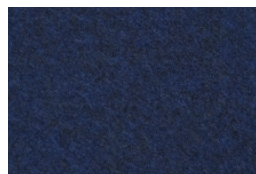
Light Grey



Medium Grey



Warm Grey



Navy



Olive Green

Notes:

1. PET screens are compatible with all AIS Products. PET Lite Clip and Channel Screens range in height from 12 to 32" with 4" increments.
2. PET, stands for polyethylene terephthalate and is a form of polyester. PET Screens are a sustainable material made from plastic bottles and provide a light weight solution for dividing space. The screens weigh 2400 g/m² and are ½" (12mm) thick. For more information, please see our technical information in the [Screens Pricebook](#).
3. Maintenance: Please refer to the [AIS Care and Maintenance Guide](#).
4. PET screens utilize Lite Clips.
5. Channel screens specified with PET can be attached horizontally.
6. U and L Wraps use one continuous piece of PET with a maximum length end-to-end of 96". Screens are shaped to wrap around worksurfaces and corners are scored to bend.
7. Front and Rear Screens have an optional 1" cut-out for wire management.
8. Radius screens available on E-Series and Day-to-Day Rectangle Height Adjustable Tables with Radius Corners.