

PET SCREENS WORKSHEET

AIS

LITE CLIP SUPPORTED SCREENS

SCREEN OPTIONS



Territory



Front/Rear



L Wrap



U Wrap

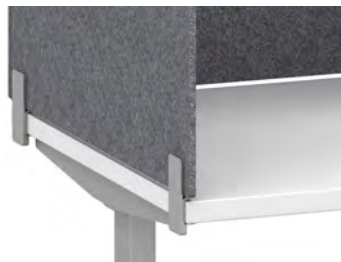


Partial Modesty

MOUNTING OPTIONS



Surface Mount



Under Surface Mount



Under Surface
Clamp Mount



Panel Mount



Freestanding

Contact the AIS Screen Team for questions: screens@ais-inc.com or 978.786.6816 Ext. 216
AIS Screens are designed to be easily installed in most industry standard applications. However, it is the full responsibility of the dealer to understand the installation methods required as well as any limitations that may impact the proper installation of AIS Screens.

LITE CLIP SUPPORTED SCREENS

APPLICATION EXAMPLES



L Wrap Partial Modesty Screen
(Divi Panel System)



Under Surface Mount Territory Lite Clip Screens
(Oxygen Desking)



Freestanding Lite Clip Screen separating a shared workspace
(Divi Panel System)



Panel Surface Mounted Lite Clip Screens
(Matrix Panel System)

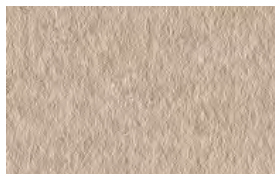
FINISHES



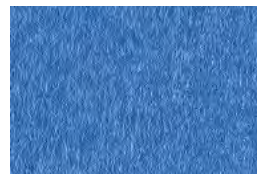
Light Grey



Medium Grey



Tan



Vibrant Blue

Notes:

1. PET screens are compatible with all AIS Products. PET Lite Clip and Channel Screens range in height from 12 to 32" with 4" increments.
2. PET, stands for polyethylene terephthalate and is a form of polyester. PET Screens are a sustainable material made from plastic bottles and provide a light weight solution for dividing space. The screens weigh 2400 g/m² and are ½" (12mm) thick. For more information, please see our technical information in the [Screens Pricebook](#).
3. Maintenance: Please refer to the [AIS Care and Maintenance Guide](#).
4. When blending PET and Lexan Clip Screens, please understand that the clips will be different. PET uses Lite Clips. Lexan uses the AIS clip for clear screens.
5. U and L Wraps use one continuous piece of PET with a maximum length end-to-end of 96". Screens are shaped to wrap around worksurfaces and corners are scored to bend.
6. Front/Rear Screens have an optional 1" cut-out for wire management.

PET SCREENS WORKSHEET

AIS

CHANNEL SUPPORTED SCREENS

SCREEN OPTIONS



Territory



Front/Rear



Channel Supported on Gallery Panel



Universal Spine*

**Universal PET spine available on Day-to-Day PowerBeam, Oxygen and Aloft*

MOUNTING OPTIONS



Surface Mount



Under Surface Mount



Panel Mount

Contact the AIS Screen Team for questions: screens@ais-inc.com or 978.786.6816 Ext. 216
AIS Screens are designed to be easily installed in most industry standard applications. However, it is the full responsibility of the dealer to understand the installation methods required as well as any limitations that may impact the proper installation of AIS Screens.

PET SCREENS WORKSHEET

AIS

CHANNEL SUPPORTED SCREENS

APPLICATION EXAMPLES



Panel Mounted Channel PET and Lexan
(Divi Panel System)



Front/Rear Surface Mounted Channel Screen
(Calibrate Height Adjustable Table)



PET and Lexan Channel Screens Vertically Mounted
(Divi Gallery Panels available 9/1)



Universal Spine Screen with Lexan Territory Clip Screens
(Day-to-Day PowerBeam)

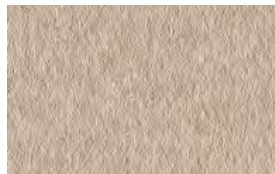
FINISHES



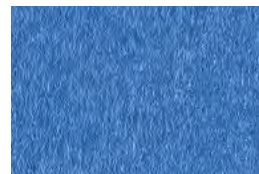
Light Grey



Medium Grey



Tan



Vibrant Blue

Notes:

1. PET screens are compatible with all AIS Products. PET Lite Clip and Channel Screens range in height from 12 to 32" with 4" increments.
2. PET, stands for polyethylene terephthalate and is a form of polyester. PET Screens are a sustainable material made from plastic bottles and provide a light weight solution for dividing space. The screens weigh 2400 g/m² and are 1/2" (12mm) thick. For more information, please see our technical information in the [Screen Pricebook](#).
3. Maintenance: Please refer to the [AIS Care and Maintenance Guide](#).
4. Channel screens specified with PET or Lexan (3/8ths only) can be attached horizontally (Day-to-Day tables, worksurfaces and panel tops) or vertically (attach to the side of Divi and Matrix gallery panels or Calibrate Storage towers) for use as additional privacy between workstations.