



# RETURNING TO WORK.

MODIFICATIONS FOR EMPLOYEE WELL-BEING



**AIS**

# GETTING BACK TO WORK: WHAT TO EXPECT

There's a new normal evolving for workplace needs. As we return to work, we know the workplace will look much different than before as we strive to address the well-being of employees. The orientation of workstations may shift and there will be more screens introduced, higher panels added, and mobile dividers sought. Aspects of Social Distancing within the workplace will be reinforced through design. AIS is committed to providing a healthy workspace with many standard product solutions that can be easily added or retrofitted into your workplace today.



ALOFT® SCREENS THAT STAND WITH YOU



- CHANGE OPTION:**
- a. 20" Spine-mount Aloft Screens replace lower spine screens
  - b. 20" Slimline Fabric Territory Screens added to each worksurface for separation between users
  - c. Calibrate Pantry Towers replace pedestals for storage that doubles as division of space
- \* Antimicrobial fabric used on all fabric screens*

B

## DIVI® LINEAR DIVI UP YOUR PERSONAL SPACE



### CHANGE OPTION 1:

- a. 36" W Wing Panels added for greater division of space
- b. 12" Channel Screens with Glass replace upmount glass

Total height of workstations: 58"



### CHANGE OPTION 2:

- a. 36" W Wing Panels added for greater division of space
- b. 24" H Fabric Stacks added to spine for more enclosure
- c. 24" H Lexan Stacks replace upmount glass on wing panels

Total height of workstations: 66"

*\*Divi Stacks provide a tight connection and eliminate gaps of traditional Divi upmount glass*



## DIVI LINEAR GO HIGHER WITH GLASS

C



### CHANGE OPTION:

- a. 48" W Panel added to back workstation for complete enclosure of workstation
- b. 16" H Channel Screen with Glass added to existing panels
- c. 16" H Channel Screen with Glass added to existing Tri-Wheel Mobile Whiteboard

Total height of workstations: 66"H

*\*Channel Screens with Glass add height while allowing light to penetrate to workstations.*



D

## OXYGEN® SPACE DIVISION EXTENDS WITH STORAGE



### CHANGE OPTION:

- a. 20" H Frosted Glass Spine replaces 12" divider
- b. 20" H Channel Territory Screens with Glass added to the end of each station for full enclosure of space
- c. 20" H Desk Hutch and Calibrate Storage added between station for full enclosure of space

Total height of workstations: 50"

E

**MATRIX™** YOUR CHOICES ARE STACKING UP



**CHANGE OPTION 1:**  
a. 16" H Recessed Matrix Glass added to the tops of all panels  
Total Height of workstations: 66"

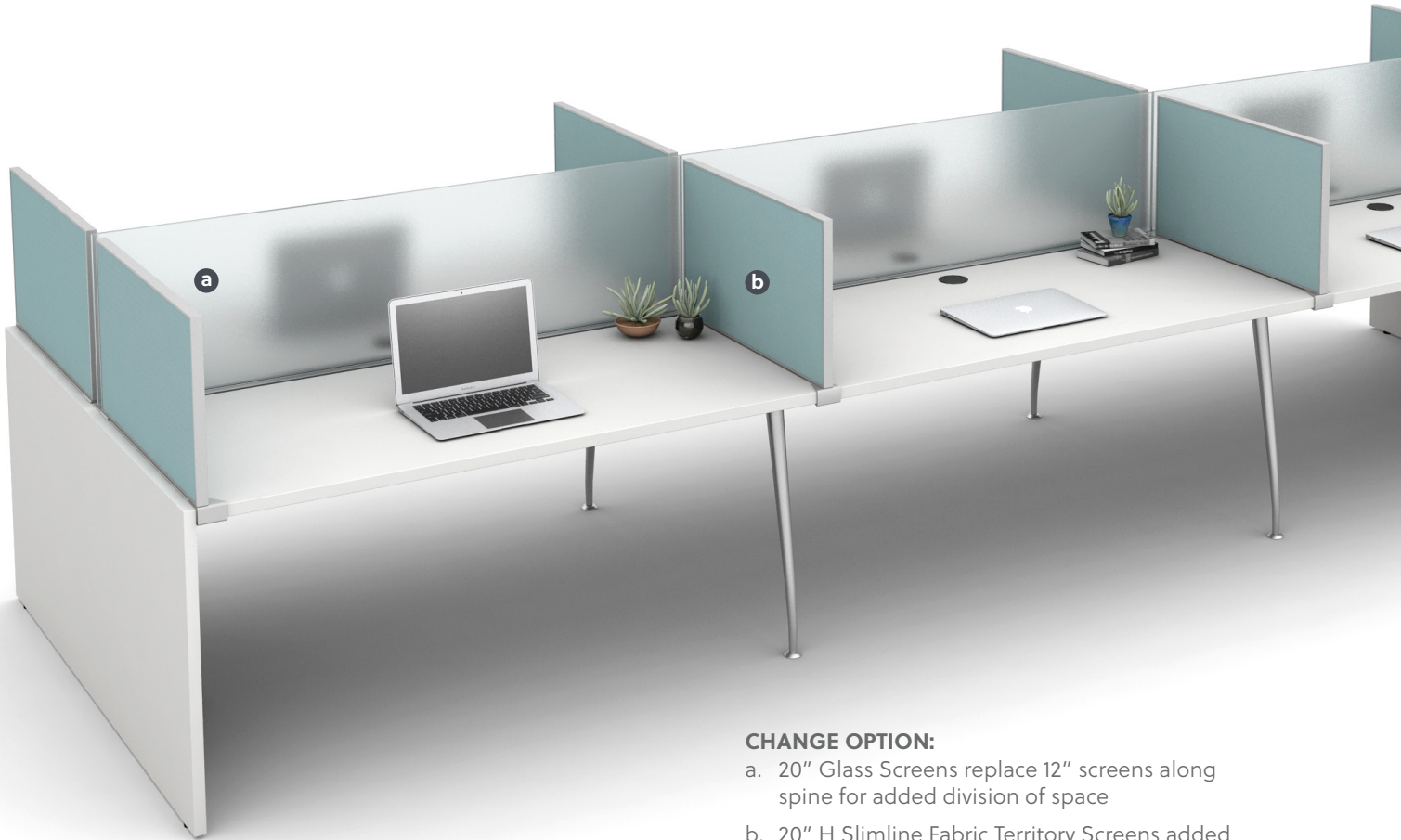


**CHANGE OPTION 2:**  
a. Panels added to the end of run and between each station for greater division of space  
b. 24" Fabric Stacks added to all panels  
c. Laminate Gallery Panels added to aisleway to partially enclosed each workstation  
Total height of workstations: 74"



**OXYGEN** SCREEN TIME GROWS

F



**CHANGE OPTION:**  
a. 20" Glass Screens replace 12" screens along spine for added division of space  
b. 20" H Slimline Fabric Territory Screens added between workstations for greater sense of enclosure  
Total height of workstations: 50"



**DIVI LINEAR** SIMPLE CHANGE FOR A GREAT DIVIDE

**CHANGE OPTION:**

- a. 24" W Quarter Glass Panels added to each office for greater enclosure
- b. 16" H Glass Stacks added to existing panels for greater division of space between stations

Total height of workstations: 66"





## DAY-TO-DAY® POWERBEAM

BEAM SCREENS GO HIGHER



### CHANGE OPTION:

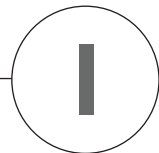
- a. 32" H Lexan Channel Territory Screens replace 16" Glass Screens for added division of space
- b. 32" Slimline Fabric Screens replace 16" Screens along spine for greater enclosure
- c. Tri-Wheel Mobile Whiteboard added between stations with Lexan Channel Screen mounted on top

Total height of workstations: 50"



## MATRIX

USER CONTROLLED SOCIAL DISTANCING



### CHANGE OPTION:

- a. 36" W Matrix Frame and Tile added to end of runs for added enclosure
- b. 24" H Lexan and Fabric Stacks added to all panels to increase height
- c. Tri-Wheel Mobile Whiteboard with nesting cutout to divide workstations

Total height of workstations: 66"



The new Tri-Wheel Mobile Whiteboard with cutout provides greater user control while easily nesting over a worksurface.  
\*Available August 1, 2020

# SOCIAL DISTANCING MADE EASIER

AIS Screens are a simple way to provide enclosure, encourage social distancing, and create peace-of mind for employers and their employees returning to work. Our three screen options are easy to retrofit on site and can help build for the changing needs of the future.



Calibrate Reception



Day-to-Day PowerBeam with Height Adjustable Tables



Calibrate Conferencing

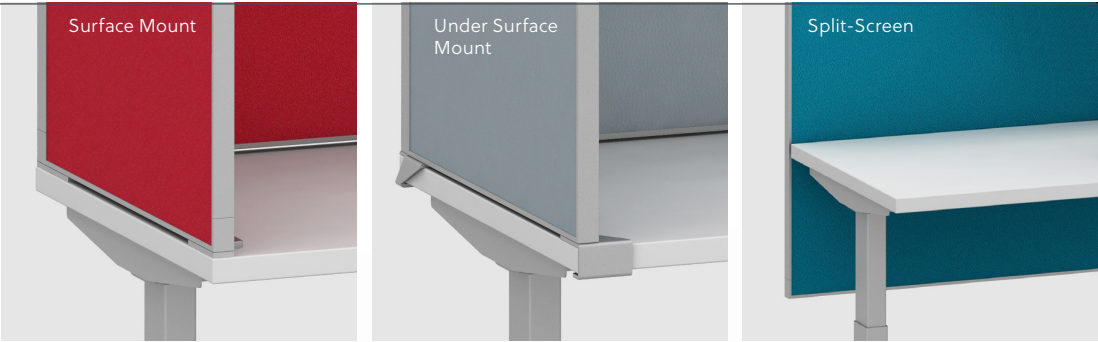


Day-to-Day Height Adjustable Table

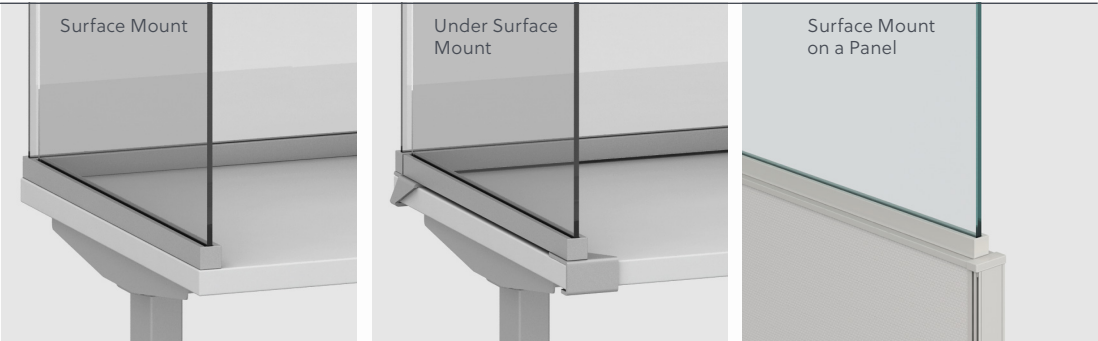


# OVERVIEW OF SCREENS

## SLIMLINE (Always Framed)



## CHANNEL SUPPORTED (Always Unframed)



## CLIP SUPPORTED (Always Unframed)

Available on Divi and Matrix panels. Please see pricelist for details.



[See the AIS Clear Screen Overview Sheet for more details.](#)

- Please note:
1. Due to the inherent properties of polycarbonate material, slight bowing is possible with Lexan™ screens.
  2. AIS cannot ensure the alignment adjacencies of both glass and Lexan materials in clip and channel screens.

# MATERIALS & FINISHES



## PAGE 1

**Workstation Worksurface:** True white  
**Aloft Legs:** Metallic Silver  
**Aloft Spine Screens:** Mirador Miami and Frosted Glass  
**Calibrate Pedestals:** True White with Aimtoo Savatre Fronts



## PAGE 8

**Workstation Worksurface and End Panel:** True white  
**Oxygen Legs:** Metallic Silver  
**Oxygen Spine Screens:** Frosted Glass  
**Oxygen Territory Screens:** Guilford Anchorage Slate



## PAGE 3

**Worksurface:** White Chocolate  
**Panel Fabric:** Cape Cod Chatham  
**Workstation Paint & Base:** Satin White  
**Height Adjustable Table Legs:** Metallic Silver  
**Pedestal Cushions:** Satin White with Mirador-Lake Blue  
**Devens Seating:** Devens Express



## PAGE 9

**Workstation Worksurface:** Trytoo Savatre  
**Panel Fabric:** Simplicity Stone and New England Rockport  
**Workstation Paint & Base:** GV1 Height Adjustable Table  
**Legs:** Day-to-Day Height Adjustable Table - Satin White  
**Overhead & Pedestals:** Satin White  
**Bolton Seating:** Black Express (MB)



## PAGE 4

**Worksurface:** Chalk  
**Panel Fabric:** Maharam Highfield  
**Workstation Paint & Base:** Chalk  
**Calibrate Storage & Mobile Whiteboard:** Absolute Acajou  
**Seating:** Devens-Graphite Mesh and Luum Thangla-Table Grapes



## PAGE 11

**Worksurfaces:** Summer Drops  
**PowerBeam, Screen Trim and Table Legs:** Metallic Silver  
**Spine Screens:** New England Hartford  
**Territory Screens:** Lexan™  
**Calibrate Storage:** Absolute Acajou Laminate with Mayer Fedora Mink Upholstered Cushions  
**Bolton Seating:** Grey Base and frame, Upholstered Back with Maharam Prime Popsicle with Sina Pearson Triangles Sunset Seat



## PAGE 5

**Workstation Worksurface:** True white  
**Oxygen Legs:** Metallic Silver  
**Oxygen Spine and Territory Screens:** Frosted Glass  
**Calibrate Storage:** Storm  
**Natick:** Grey frame, Polished base, Orange Graduated Stripe Mesh and Guilford Frolic Slate Seat



## PAGE 12

**Worksurface:** True White  
**Panel Fabric:** Simplicity Stone  
**Workstation Trim Paint:** Grey Value  
**Calibrate Storage:** True White with Aimtoo Savatre Fronts and Guilford Open House Lapis Seat Cushions  
**Mobile Whiteboard:** Aimtoo Savatre  
**Natick Seating:** Black base and frame, Grey Graduated Stripe Back, Guilford Open House Lapis Seat



## PAGE 7

**Worksurface:** True White  
**Panel Fabric:** New England Dixville Knox  
**Workstation Trim Paint:** Metallic Silver  
**Calibrate Storage and Gallery Panels:** Midwest Maple  
**Natick Seating:** Black Express

Please request samples to view before specifying as the colors, materials and finishes featured within our literature may vary due to the printing process and/or viewing screens used. Availability of finishes and materials shown within this brochure may vary due to the manufacturers' lifecycle management. Some materials shown are standard on AIS and some may be a COM. Please check with AIS to confirm availability and pricing.

### National Showrooms:

#### Leominster

AIS Headquarters  
25 Tucker Drive  
Leominster, MA 01453

#### Chicago

The Merchandise Mart  
Suite 1086  
Chicago, IL 60654

#### New York

AIS New York  
257 Park Avenue South  
New York, NY 10010

#### Washington, D.C.

AIS Washington, D.C.  
1400 I St., NW, Suite 750  
Washington, D.C. 20005

#### GSA Sales

GSA Contract GS-29F-0006K  
FSC Group 71  
Part 1 Office Furniture

**For additional information on AIS:** Dealer Showrooms, Representative Directory, Project Case Studies, Online Catalog & Product Showcase  
800.434.7400 | 978.562.7500 | [www.ais-inc.com](http://www.ais-inc.com) | [imagelibrary.ais-inc.com](mailto:imagelibrary.ais-inc.com) | [info@ais-inc.com](mailto:info@ais-inc.com) | 05/2020 RTW

# AIS