

# UPHOLSTERY FABRIC OPTIONS

Seating & Cushions



**Stinson**

**AI**S

# Stinson Upholstery

# AIS



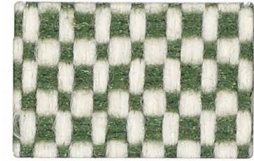
Square One  
64856 Fleece



64853  
Oak



64862  
Skyway



64861  
Grasshopper



64858  
Dolphin



64857  
Charcoal



64854  
Black & White



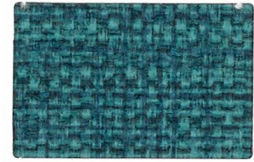
Flanders  
64871 Bermuda



FLA 54  
Fossil



FLA 58  
Coconut



FLA 66  
Polynesia



FLA 57  
Lifesaver



FLA 63  
Slate



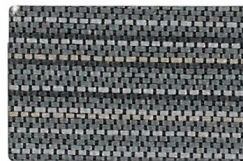
FLA 68  
Charcoal



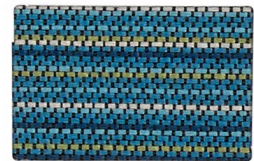
Lateral  
64841 Citrine



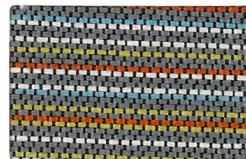
64840  
Mist



64844  
Sterling



64843  
Calypso



64842  
Horizon



64847  
Sangria



64848  
Skyline



Hopsack  
HOP 24 Fjord



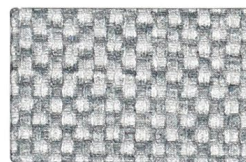
HOP 10  
Stucco



HOP 15  
Bamboo



HOP 25  
Hemlock



HOP 11  
Oslo



HOP 14  
Rain

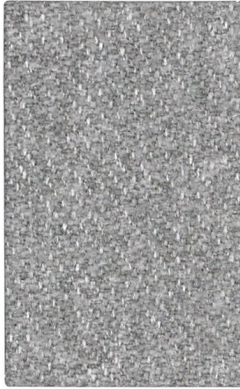


HOP 17  
Carbon



# Stinson Upholstery

# AIS



Outlander  
64214 Fog



64207  
Cashmere



64220  
Electric



64219  
Flannel



64215  
Aquamarine



64225  
Dark Blue



64218  
Mars



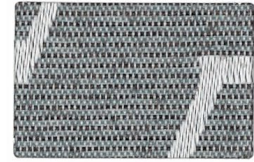
Charlotte  
65366 Peridot



65368  
Marzipan



65372  
Lapis



65373  
Silver



65367  
Sunset



65374  
Lagoon



65375  
Graphite



65376  
Ink



65370  
Tungsten



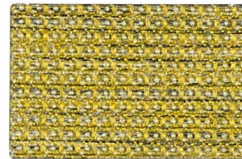
65369  
Cherrywood



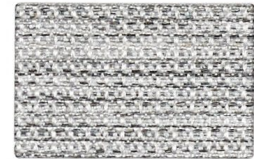
Fleck  
65424 Marine



65412  
Cotton Candy



65411  
Canary



65410  
Gull



65426  
Siren



65416  
Pistachio



65420  
Ironwood



65429  
Nocturne



65425  
Graphite



65430  
Wolf

# Stinson Upholstery

## Technical Information

Pattern 54"	Content & Backing	Certification	Weight	Pattern Repeat	Finish	Abrasion Wyznbeek	Lightfastness	Flammability*	Cleaning Code	Grade**
Charlotte Directional	47% Post Industrial Recycled Polyester, 27% Polyester, 26% Post Consumer Recycled Polyester Backing: Acrylic	GREENGUARD GOLD LBC Red List Free	11.05 oz.	14.875" h, 17.125" v	Non-PFOA Stain Resistant	72,000 <sup>^</sup> Double Rubs	Class 4.0 40 hours	Cal.117-2013 NFPA 260 / UFAC Class 1	W-S, BC	D
Flanders Directional	Vinyl Surface Backing: Polyester Inherent Fluid Barrier	GREENGUARD	30 oz.	None	Advanced Soil and Stain Resistant Topcoat	250,000 <sup>^</sup> Double rubs	Class 4.5 300 hours	Cal.117-2013 NFPA 260 / UFAC Class 1	W-S, BC	E
Fleck Directional	100% Polyester Backing: SBR Synthetic	GREENGUARD GOLD LBC Red List Free	16 oz.	None	Enhanced Soil and Stain Protection	100,000 <sup>^</sup> Double Rubs	Class 5 40 hours	Cal.117-2013 NFPA 260 / UFAC Class 1	W-S, BC	D
Hopsack Directional	Vinyl Surface Backing: Polyester Inherent Fluid Barrier	GREENGUARD	30 oz.	None	Advanced Soil and Stain Resistant Topcoat	100,000 <sup>^</sup> Double Rubs	Class 4.5 1000 hours	Cal.117-2013 NFPA 260 / UFAC Class 1	W-S, BC	E
Lateral Directional	65% Post Consumer Recycled Polyester, 35% Polyester Backing: Acrylic	GREENGUARD GOLD	10.05 oz.	0.0" h, 4.375" v	GreenShield® Soil and Stain Protection	120,000 <sup>^</sup> Double Rubs	Class 5 60 hours	Cal.117-2013 NFPA 260 / UFAC Class 1	W-S, BC	D
Outlander Directional	100% Polyester Backing: SBR Synthetic	GREENGUARD GOLD LBC Red List Free	15.05 oz.	None	Enhanced Soil and Stain Protection	100,000 <sup>^</sup> Double Rubs	Class 4.5 40 hours	Cal.117-2013 NFPA 260 / UFAC Class 1 ASTM E-84 (Unadhered)	W-S, BC	E
Square One Directional	63% Polyester, 37% Olefin Backing: Acrylic	GREENGUARD GOLD LBC Red List Free	19.6 oz.	.125"h, .25" v	Non-PFOA Stain Resistant	87,000 <sup>^</sup> Double Rubs	Class 4.0 40 hours	Cal.117-2013 NFPA 260 / UFAC Class 1	W-S, BC	E

### REDUCED ENVIRONMENTAL IMPACT

These products are GREENGUARD Certified or GREENGUARD GOLD Certified for low chemical and particle emissions to UL standard UL 2818 and may contribute to LEED Certification  
No FR Additives / No Antimicrobial Additives

### CARE AND CLEANING INFORMATION

WS: Water / Solvent Cleaner

BC: Bleach Cleanable – 1 part bleach, 9 parts water = 10% Bleach, 90% Water solution. **Do not clean / disinfect fabric for longer than 10 minutes using the 10% bleach solution. Always rinse promptly with clean water after applying the bleach solution. Failure to do so will void any and all warranties.**

### DYE TRANSFER DISCLAIMER

Certain clothing and accessory dyes (such as those used in denim jeans) may migrate to lighter colors. This phenomenon is increased by humidity and temperature and is irreversible. Stinson will not assume responsibility for dye transfer caused by external contaminants. Please check compatibility when using these products in combination with painted or varnished surfaces.

### ADDITIONAL INFORMATION

<sup>^</sup>Abrasion test results exceeding ACT Performance Guidelines are not an indicator of product lifespan. Multiple factors affect fabric durability and appearance retention.

\*This term and any corresponding data refer to the typical performance in the tests indicated and should not be construed to imply the behavior of this or any other material under actual fire conditions.

\*\*Grades shown are for 2022 and may shift due to pricing volatility. Please check with AIS to confirm fabric grade prior to ordering.

For memo samples and complete specifications, visit [cfstinson.com](http://cfstinson.com)

Dye lots may vary slightly from samples shown

All colorways for each pattern featured on this card are available through the Alliance Program



These fabrics meet or exceed these ACT Performance Guidelines  
\*Certification Marks owned by ACT®

To order memos, please visit [www.cfstinson.com](http://www.cfstinson.com).

To view samples online, visit [www.ais-inc.com/finishcenter](http://www.ais-inc.com/finishcenter)

800.434.7400 | 978.562.7500 | [www.ais-inc.com](http://www.ais-inc.com) | 05/2022 | ALLSTIFC

# AIS