



UPTON™
Seating

AIS

GOOD LOOKS THAT PERFORM.

Ultimate comfort and a clean, modern aesthetic come together in Upton. Designed for focused and collaborative work, the Upton task and conference chairs conform to each user's individual needs. Adjustable features – optional adjustable lumbar support, back-lock, and adjustable back height allow users to find their perfect fit. Combined with its understated looks, Upton is the next-level task or conference room chair every organization deserves.



Style and **comfort** options are in full supply.

Upton provides ample options to design just the chair you need. Consider a colored mesh back with an upholstered seat. Choose from 1D, armless, or a fixed aluminum arm. Explore the charcoal all-mesh seat and back with the optional enhanced lumbar support feature that extends your choices even further. Available as a task, conference, or stool with six vibrant mesh colors for the back and many seat upholstery options, so much is possible with Upton.



UPTON

Features & Options

- Optional polished aluminum base
- Synchro-tilt mechanism with side tension adjustment
- Pneumatic seat height adjustment
- Fixed aluminum arm, 1D, or armless
- Body conforming or optional adjustable lumbar support
- Back height adjustment
- Seat depth adjustment
- Multiple position back-lock
- Back offered in six different mesh colors with upholstered seat
- Upholstered or charcoal mesh seat
- Full mesh chair with charcoal mesh seat and charcoal mesh back option
- Optional headrest
- BIFMA level® certified
- CAL 117 or optional CAL 133 fire code compliant
- All-black models are in the Express Program (three-day ship)

Task Seating – 4700/4700MM (Mesh Seat)

Weight	36 lbs
Width	25"
Depth	25"
Height	38 – 42"
Seat Width	19"
Seat Depth	17 – 19"
Seat Height	17.75 – 21.75"
Arm Height	8 – 11"
Lumbar Apex	8.25 – 9.25"

Stool – 4700C (Configurable)/4700MMC (Mesh)

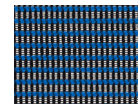
Weight	42 lbs
Width	26"
Depth	26"
Height	40 – 48"
Seat Width	19"
Seat Depth	17 – 19"
Seat Height	22.75 – 29.75"
Arm Height	8 – 11"
Lumbar Apex	8.25 – 9.25"



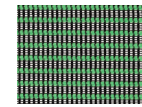
Mesh colors include:



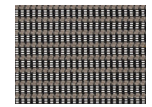
Black-Black Striped



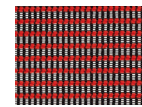
Blue-Black Striped



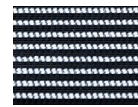
Green-Black Striped



Grey-Black Striped



Red-Black Striped



White-Black Striped

Due to print variations, colors and materials shown may not be fully accurate. Please see your AIS representative for samples.



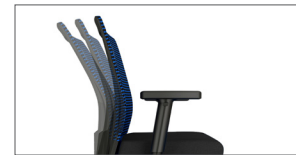
Synchro-tilt mechanism with side tension adjustment

Upton moves with each person's natural pivot points and seated body motion. Users can easily set the tension for personal comfort.



Standard with adjustable back height and body conforming support; adjustable lumbar support optional

From the lower back up, Upton supports the user for a full day's work.



Multiple position back-lock

Workers of all sizes can adjust Upton to find the ideal back position.



1D Arm

Height adjustable arms are one of the many ways Upton can be tuned to provide ultimate comfort.



Fixed aluminum arm

Create a streamlined aesthetic with a fixed aluminum arm.

For additional images: <http://imagelibrary.ais-inc.com/>

800.434.7400 | 978.562.7500 | www.ais-inc.com | info@ais-inc.com | 12/2020 | UPTBR

AIS