



UPTON™

Seating

AIS

UPTON

Set the tone of style and comfort with Upton seating. Upton's superior fit and finish result in a sophisticated task chair and stool at an exceptional price point. Standard features such as adjustable seat height and depth, back height, and multiple position back-lock allow user to fine-tune Upton for proper fit.

Features & Options

- Optional polished aluminum base
- Synchro-tilt mechanism with side tension adjustment
- Pneumatic seat height adjustment
- Fixed aluminum arm, 1D, or armless
- Body conforming or optional adjustable lumbar support
- Back height adjustment
- Seat depth adjustment
- Multiple position back-lock
- Back offered in six different mesh colors with upholstered seat
- Upholstered or charcoal mesh seat
- Full mesh chair with charcoal mesh seat and charcoal mesh back option
- Optional headrest
- BIFMA level® certified
- CAL 117 or optional CAL 133 fire code compliant
- All-black models are in the Express Program (three-day ship)

Task Seating – 4700/4700MM (Mesh Seat)

Weight	36 lbs
Width	25"
Depth	25"
Height	38 – 42"
Seat Width	19"
Seat Depth	17 – 19"
Seat Height	17.75 – 21.75"
Arm Height	8 – 11"
Lumbar Apex	8.25 – 9.25"

Stool – 4700C (Configurable)/4700MMC (Mesh)

Weight	42 lbs
Width	26"
Depth	26"
Height	40 – 48"
Seat Width	19"
Seat Depth	17 – 19"
Seat Height	22.75 – 29.75"
Arm Height	8 – 11"
Lumbar Apex	8.25 – 9.25"

For additional images: <http://imagelibrary.ais-inc.com/>

800.434.7400 | 978.562.7500 | www.ais-inc.com | info@ais-inc.com | 12/2020 | UPTPS



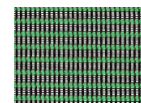
Mesh colors include:



Black-Black Striped



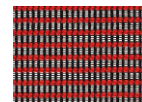
Blue-Black Striped



Green-Black Striped



Grey-Black Striped



Red-Black Striped



White-Black Striped

Due to print variations, colors and materials shown may not be fully accurate. Please see your AIS representative for samples.



Synchro-tilt mechanism with side tension adjustment

Upton moves with each person's natural pivot points and seated body motion. Users can easily set the tension for personal comfort.



Standard with adjustable back height and body conforming support; adjustable lumbar support optional

From the lower back up, Upton supports the user for a full day's work.



Multiple position back-lock

Workers of all sizes can adjust Upton to find the ideal back position.



1D Arm

Height adjustable arms are one of the many ways Upton can be tuned to provide ultimate comfort.



Fixed aluminum arm

Create a streamlined aesthetic with a fixed aluminum arm.

AIS